



Order: (888)-282-5810 (Phone)
(818)-707-0392 (Fax)
order@abiocode.com
Web: www.Abiocode.com

TMEM66 (N) Antibody, Rabbit Polyclonal

Cat#: R3238-1b

Quantity: 100 ul

Predicted | Observed M.W.: 37 | 42, 18 kDa

Lot#: Refer to vial

Application: WB

Uniprot ID: Q96BY9

Background:

Transmembrane protein 66 (TMEM66) is a single-pass type I membrane protein and a negative regulator of store-operated Ca^{2+} entry (SOCE) involved in protecting cells from Ca^{2+} overfilling. In response to cytosolic Ca^{2+} elevation after endoplasmic reticulum Ca^{2+} refilling, TMEM66 promotes a slow inactivation of STIM (STIM1 or STIM2)-dependent SOCE activity, possibly by facilitating the deoligomerization of STIM to efficiently turn off ORAI when the endoplasmic reticulum lumen is filled with the appropriate Ca^{2+} levels, and thus preventing the overload of the cell with excessive Ca^{2+} ions.

Other Names:

Store-operated calcium entry-associated regulatory factor, SARAF, SOCE-associated regulatory factor, HBV X-transactivated gene 3 protein, HBV XAg-transactivated protein 3, Protein FOAP-7, Transmembrane protein 66, SARAF, XTP3, HSPC035, NPD003, PSEC0019, UNQ1967/PRO4499

Source and Purity:

Rabbit polyclonal antibodies were produced by immunizing animals with a GST-fusion protein containing N-terminal region of human TMEM66. Antibodies were purified by affinity purification using immunogen.

Storage Buffer and Condition:

Supplied in 1 x PBS (pH 7.4), 100 ug/ml BSA, 40% Glycerol, 0.01% NaN_3 . Store at $-20\text{ }^\circ\text{C}$. Stable for 6 months from date of receipt.

Species Specificity:

Human, Mouse

Tested Applications:

WB: 1:1,000-1:3,000 (detect endogenous protein*)

*: The apparent protein size on WB may be different from the calculated M.W. due to modifications.

Product Data:

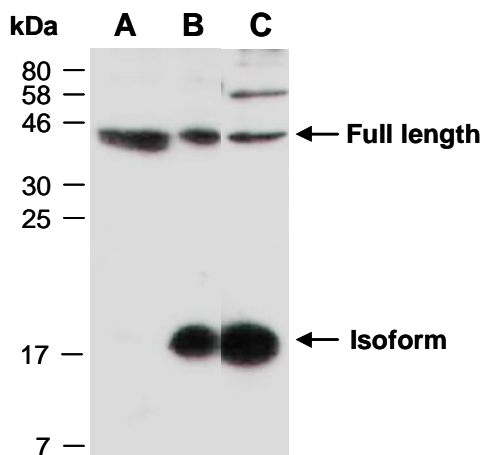


Fig 1. Western blot of total cell extracts from A) mouse brain, B) mouse thymus, C) human Jurkat; using anti-TMEM66 (N) (R3238-1b) at RT for 2 h. This Ab appears to recognize the 42 kD full length and 18 kD isoform of TMEM66.