



Order: (888)-282-5810 (Phone)
(818)-707-0392 (Fax)
order@abiocode.com
Web: www.Abiocode.com

GLP2R (N) Antibody, Rabbit Polyclonal

Cat#: R3263-1

Quantity: 100 ul

Predicted | Observed M.W.: 63 kDa

Lot#: Refer to vial

Application: WB

Uniprot ID: O95838

Background:

Glucagon-like peptide 2 receptor (GLP2R) is a multi-pass cell membrane protein that belongs to the G-protein coupled receptor 2 family. GLP2R is a receptor for glucagon-like peptide 2, and the activity of this receptor is mediated by G proteins which activate adenylyl cyclase.

Other Names:

Glucagon-like peptide 2 receptor, GLP-2 receptor, GLP-2-R, GLP-2R

Source and Purity:

Rabbit polyclonal antibodies were produced by immunizing animals with a GST-fusion protein containing N-terminal region of human GLP2R. Antibodies were purified by affinity purification using immunogen.

Storage Buffer and Condition:

Supplied in 1 x PBS (pH 7.4), 100 ug/ml BSA, 40% Glycerol, 0.01% NaN₃. Store at -20 °C. Stable for 6 months from date of receipt.

Species Specificity:

Human, Mouse

Tested Applications:

WB: 1:1,000-1:3,000 (detect endogenous protein*)

*: The apparent protein size on WB may be different from the calculated M.W. due to modifications.

Product Data:

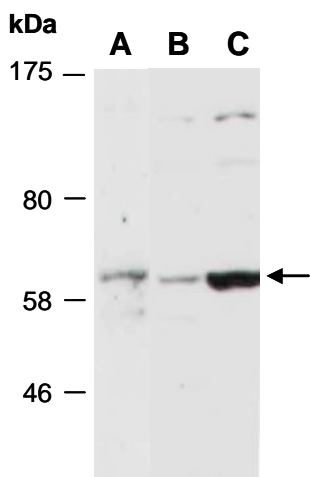


Fig 1. Western blot of total cell extracts from A) mouse thymus, B) human HeLa, C) human Jurkat; using anti-GLP2R (N) (R3263-1) at RT for 2 h.