



Order: (888)-282-5810 (Phone)  
(818)-707-0392 (Fax)  
[order@abiocode.com](mailto:order@abiocode.com)  
Web: [www.Abiocode.com](http://www.Abiocode.com)

---

## **KIRREL3 (N) Antibody, Rabbit Polyclonal**

**Cat#: R3313-1a**

**Quantity: 100 ul**

**Predicted | Observed M.W.: 85 | 140 kDa**

**Lot#: Refer to vial**

**Application: WB**

**Uniprot ID: Q8IZU9**

### **Background:**

Kin of irregular chiasm-like protein 3 (KIRREL3) is a single-pass type I cell membrane protein and a member of the nephrin-like protein family. These proteins are expressed in fetal and adult brain, and also in podocytes of kidney glomeruli. The cytoplasmic domains of these proteins interact with the C-terminus of podocin, also expressed in the podocytes, cells involved in ensuring size- and charge-selective ultrafiltration. Mutations in KIRREL3 are associated with mental retardation autosomal dominant type 4 (MRD4). Alternatively spliced transcript variants encoding different isoforms have been found for this gene [provided by RefSeq].

### **Other Names:**

Kin of IRRE-like protein 3, Kin of irregular chiasm-like protein 3, Nephrin-like protein 2, KIAA1867, NEPH2

### **Source and Purity:**

Rabbit polyclonal antibodies were produced by immunizing animals with a GST-fusion protein containing N-terminal region of human KIRREL3. Antibodies were purified by affinity purification using immunogen.

### **Storage Buffer and Condition:**

Supplied in 1 x PBS (pH 7.4), 100 ug/ml BSA, 40% Glycerol, 0.01% NaN<sub>3</sub>. Store at -20 °C. Stable for 6 months from date of receipt.

### **Species Specificity:**

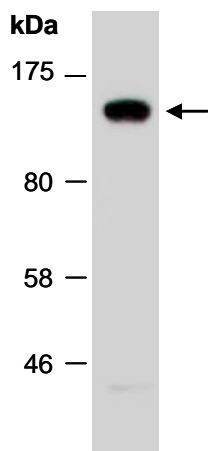
Human, Mouse

### **Tested Applications:**

WB: 1:1,000-1:3,000 (detect endogenous protein\*)

\*: The apparent protein size on WB may be different from the calculated M.W. due to modifications.

**Product Data:**



**Fig 1.** Western blot of total cell extracts from mouse brain; using anti-KIRREL3 (N) (R3313-1a) at RT for 2 h.