



Order: (888)-282-5810 (Phone)
(818)-707-0392 (Fax)
order@abiocode.com
Web: www.Abiocode.com

KIRREL3 (N) Antibody, Rabbit Polyclonal

Cat#: R3313-1b

Quantity: 100 ul

Predicted | Observed M.W.: 85 | 65 kDa

Lot#: Refer to vial

Application: WB

Uniprot ID: Q8IZU9

Background:

Kin of irregular chiasm-like protein 3 (KIRREL3) is a single-pass type I cell membrane protein and a member of the nephrin-like protein family. These proteins are expressed in fetal and adult brain, and also in podocytes of kidney glomeruli. The cytoplasmic domains of these proteins interact with the C-terminus of podocin, also expressed in the podocytes, cells involved in ensuring size- and charge-selective ultrafiltration. Mutations in KIRREL3 are associated with mental retardation autosomal dominant type 4 (MRD4). Alternatively spliced transcript variants encoding different isoforms have been found for this gene [provided by RefSeq].

Other Names:

Kin of IRRE-like protein 3, Kin of irregular chiasm-like protein 3, Nephrin-like protein 2, KIAA1867, NEPH2

Source and Purity:

Rabbit polyclonal antibodies were produced by immunizing animals with a GST-fusion protein containing N-terminal region of human KIRREL3. Antibodies were purified by affinity purification using immunogen.

Storage Buffer and Condition:

Supplied in 1 x PBS (pH 7.4), 100 ug/ml BSA, 40% Glycerol, 0.01% NaN₃. Store at -20 °C. Stable for 6 months from date of receipt.

Species Specificity:

Human

Tested Applications:

WB: 1:1,000-1:3,000 (detect endogenous protein*)

*: The apparent protein size on WB may be different from the calculated M.W. due to modifications.

Product Data:

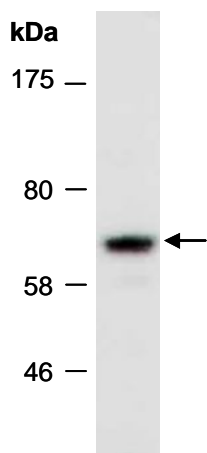


Fig 1. Western blot of total cell extracts from human HeLa; using anti-KIRREL3 (N) (R3313-1b) at RT for 2 h. This Ab recognizes the 65 kD isoform of KIRREL3.