



Order: (888)-282-5810 (Phone)
(818)-707-0392 (Fax)
order@abiocode.com
Web: www.Abiocode.com

EGF (C2) Antibody, Rabbit Polyclonal

Cat#: R0397-5

Quantity: 100 ul

Predicted | Observed M.W.: 133 | 145 kDa

Lot#: Refer to vial

Application: WB

Uniprot ID: P01132

Background:

EGF stimulates the growth of various epidermal and epithelial tissues in vivo and in vitro and of some fibroblasts in cell culture. EGF is also a magnesiotropic hormone that stimulates magnesium reabsorption in the renal distal convoluted tubule via engagement of EGFR and activation of the magnesium channel TRPM6. Pro-EGF is a single pass membrane protein that is further cleaved into mature EGF.

Other Names:

Pro-epidermal growth factor, further cleave into mature epidermal growth factor (EGF)

Source and Purity:

Rabbit polyclonal antibodies were produced by immunizing animals with a GST-fusion protein containing C-terminal region of murine EGF. Antibodies were purified by affinity purification using immunogen.

Storage Buffer and Condition:

Supplied in 1 x PBS (pH 7.4), 100 ug/ml BSA, 40% Glycerol, 0.01% NaN₃. Store at -20 °C. Stable for 6 months from date of receipt.

Species Specificity:

Human, Mouse

Tested Applications:

WB: 1:1,000-1:3,000 (detect endogenous protein*)

*: The apparent protein size on WB may be different from the calculated M.W. due to modifications.

Product Data:

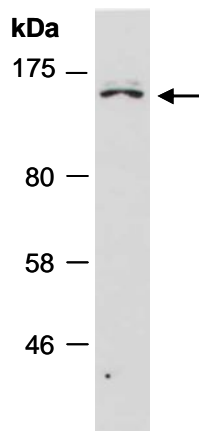


Fig 1. Western blot of total cell extracts from human HeLa; using anti-EGF (C2) (R0397-5) at RT for 2 h.