



Order: (888)-282-5810 (Phone)  
(818)-707-0392 (Fax)  
[order@abiocode.com](mailto:order@abiocode.com)  
Web: [www.Abiocode.com](http://www.Abiocode.com)

---

## **HOMER1 (C) Antibody, Rabbit Polyclonal**

**Cat#: R3198-2**

**Quantity: 100 ul**

**Predicted | Observed M.W.: 40 | 45 kDa**

**Lot#: Refer to vial**

**Application: WB**

**Uniprot ID: Q86YM7**

### **Background:**

Homer protein homolog 1 (HOMER1) is a postsynaptic density scaffolding protein. HOMER1 binds and cross-links cytoplasmic regions of GRM1, GRM5, ITPR1, DNM3, RYR1, RYR2, SHANK1 and SHANK3. By physically linking GRM1 and GRM5 with ER-associated ITPR1 receptors, it aids the coupling of surface receptors to intracellular calcium release. HOMER1 may also couple GRM1 to PI3 kinase through its interaction with AGAP2. Three isoforms of HOMER1 have been identified with a predicted M.W. of 40, 26, 20 kD, respectively. Isoform 1 regulates the trafficking and surface expression of GRM5. Isoform 3 acts as a natural dominant negative, in dynamic competition with constitutively expressed isoform 1 to regulate synaptic metabotropic glutamate function.

### **Other Names:**

Homer protein homolog 1, Homer-1, SYN47

### **Source and Purity:**

Rabbit polyclonal antibodies were produced by immunizing animals with a GST-fusion protein containing C-terminal region of human HOMER1. Antibodies were purified by affinity purification using immunogen.

### **Storage Buffer and Condition:**

Supplied in 1 x PBS (pH 7.4), 100 ug/ml BSA, 40% Glycerol, 0.01% NaN<sub>3</sub>. Store at -20 °C. Stable for 6 months from date of receipt.

### **Species Specificity:**

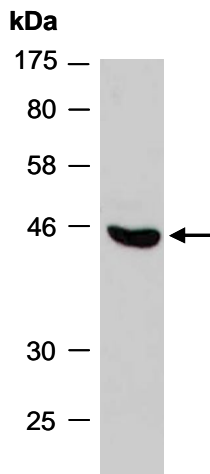
Human, Mouse

### **Tested Applications:**

WB: 1:1,000-1:3,000 (detect endogenous protein\*)

\*: The apparent protein size on WB may be different from the calculated M.W. due to modifications.

**Product Data:**



**Fig 1.** Western blot of total cell extracts from mouse brain; using anti-HOMER1 (C) (R3198-2) at RT for 2 h.