



Order: (888)-282-5810 (Phone)  
(818)-707-0392 (Fax)  
[order@abiocode.com](mailto:order@abiocode.com)  
Web: [www.Abiocode.com](http://www.Abiocode.com)

---

## TICAM2 (C) Antibody, Rabbit Polyclonal

**Cat#: R3200-3**

**Quantity: 100 ul**

**Predicted | Observed M.W.: 27, 46 | 27 kDa**

**Lot#: Refer to vial**

**Application: WB**

**Uniprot ID: Q86XR7**

### **Background:**

TIR domain-containing adapter molecule 2 (TICAM2) functions as sorting adapter in LPS-TLR4 signaling to regulate the MYD88-independent pathway during the innate immune response to LPS. TICAM2 physically bridges TLR4 and TICAM1 and functionally transmits LPS-TLR4 signal to TICAM1; signaling is proposed to occur in early endosomes after endocytosis of TLR4. TICAM2 may also be involved in IL1-triggered NF-kappa-B activation, functioning upstream of IRAK1, IRAK2, TRAF6, and IKKB; however, reports are controversial. Two isoforms of TICAM2 have been identified: isoform 1 (also known as TRAM) and isoform 2 (also known as TAG; TRAM adaptor with GOLD domain), which differ at their N-terminus. Isoform 2 is proposed to inhibit LPS-TLR4 signaling at the late endosome by interaction with isoform 1; thereby disrupting the association of isoform 1 with TICAM1.

### **Other Names:**

TIR domain-containing adapter molecule 2, TICAM-2, Putative NF-kappa-B-activating protein 502, TRIF-related adapter molecule, Toll-like receptor adaptor protein 3, Toll/interleukin-1 receptor domain-containing protein, MyD88-4, TIRAP3, TIRP, TRAM

### **Source and Purity:**

Rabbit polyclonal antibodies were produced by immunizing animals with a GST-fusion protein containing C-terminal region of human TICAM2. Antibodies were purified by affinity purification using immunogen.

### **Storage Buffer and Condition:**

Supplied in 1 x PBS (pH 7.4), 100 ug/ml BSA, 40% Glycerol, 0.01% NaN<sub>3</sub>. Store at -20 °C. Stable for 6 months from date of receipt.

### **Species Specificity:**

Human, Mouse

### **Tested Applications:**

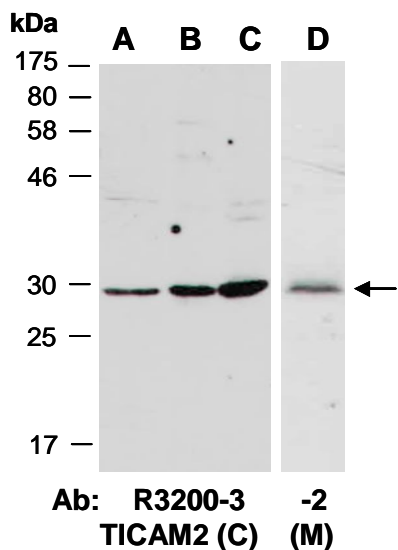
WB: 1:1,000-1:3,000 (detect endogenous protein\*)

\*: The apparent protein size on WB may be different from the calculated M.W. due to modifications.

---

**For research use only. Not for therapeutic or diagnostic purposes.  
Abiocode, Inc., 29397 Agoura Rd., Ste 106, Agoura Hills, CA 91301**

**Product Data:**



**Fig 1.** Western blot of total cell extracts from A) mouse thymus, B, D) human HeLa, C) human Jurkat; using 2 independent Abs against 2 distinct regions of human TICAM2 at RT for 2 h. These 2 Abs predominately recognize TICAM2 isoform 1.