



Order: (888)-282-5810 (Phone)
(818)-707-0392 (Fax)
order@abiocode.com
Web: www.Abiocode.com

GEMIN6 (M) Antibody, Rabbit Polyclonal

Cat#: R3229-1

Quantity: 100 ul

Predicted | Observed M.W.: 19 | 28 kDa

Lot#: Refer to vial

Application: WB

Uniprot ID: Q8WXD5

Background:

The SMN complex plays an essential role in spliceosomal snRNP assembly in the cytoplasm and is required for pre-mRNA splicing in the nucleus. Gem-associated protein 6 (GEMIN6) is part of the core SMN complex that contains SMN1, GEMIN2/SIP1, DDX20/GEMIN3, GEMIN4, GEMIN5, GEMIN6, GEMIN7, GEMIN8 and STRAP/UNRIP. GEMIN6 interacts directly with GEMIN7, SNRPB, SNRPD2, SNRPD3 and SNRPE.

Other Names:

Gem-associated protein 6, Gemin-6, SIP2

Source and Purity:

Rabbit polyclonal antibodies were produced by immunizing animals with a GST-fusion protein containing middle region of human GEMIN6. Antibodies were purified by affinity purification using immunogen.

Storage Buffer and Condition:

Supplied in 1 x PBS (pH 7.4), 100 ug/ml BSA, 40% Glycerol, 0.01% NaN₃. Store at -20 °C. Stable for 6 months from date of receipt.

Species Specificity:

Human, Mouse

Tested Applications:

WB: 1:1,000-1:3,000 (detect endogenous protein*)

*: The apparent protein size on WB may be different from the calculated M.W. due to modifications.

Product Data:

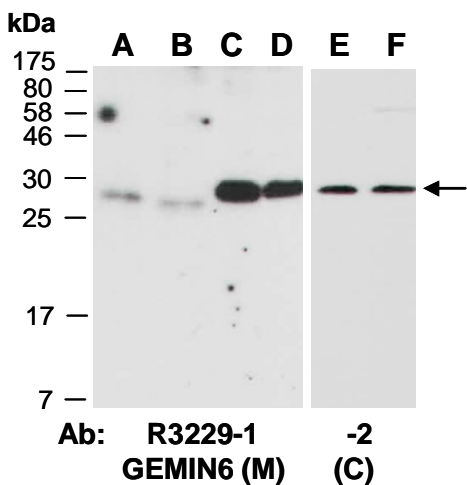


Fig 1. Western blot of total cell extracts from A) mouse brain, B) mouse thymus, C, E) human HeLa, D, F) human Jurkat; using 2 independent Abs against 2 distinct regions of human GEMIN6 at RT for 2 h.