



Order: (888)-282-5810 (Phone)  
(818)-707-0392 (Fax)  
[order@abiocode.com](mailto:order@abiocode.com)  
Web: [www.Abiocode.com](http://www.Abiocode.com)

---

## **GEMIN6 (C) Antibody, Rabbit Polyclonal**

**Cat#:** R3229-2

**Quantity:** 100 ul

**Predicted | Observed M.W.:** 19 | 28 kDa

**Lot#:** Refer to vial

**Application:** WB

**Uniprot ID:** Q8WXD5

### **Background:**

The SMN complex plays an essential role in spliceosomal snRNP assembly in the cytoplasm and is required for pre-mRNA splicing in the nucleus. Gem-associated protein 6 (GEMIN6) is part of the core SMN complex that contains SMN1, GEMIN2/SIP1, DDX20/GEMIN3, GEMIN4, GEMIN5, GEMIN6, GEMIN7, GEMIN8 and STRAP/UNRIP. GEMIN6 interacts directly with GEMIN7, SNRPB, SNRPD2, SNRPD3 and SNRPE.

### **Other Names:**

Gem-associated protein 6, Gemin-6, SIP2

### **Source and Purity:**

Rabbit polyclonal antibodies were produced by immunizing animals with a GST-fusion protein containing C-terminal region of human GEMIN6. Antibodies were purified by affinity purification using immunogen.

### **Storage Buffer and Condition:**

Supplied in 1 x PBS (pH 7.4), 100 ug/ml BSA, 40% Glycerol, 0.01% NaN<sub>3</sub>. Store at -20 °C. Stable for 6 months from date of receipt.

### **Species Specificity:**

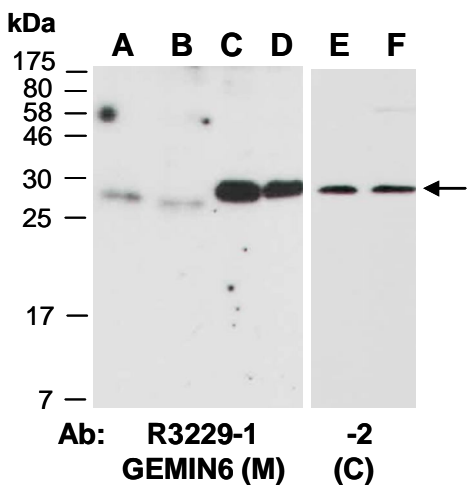
Human

### **Tested Applications:**

WB: 1:1,000-1:3,000 (detect endogenous protein\*)

\*: The apparent protein size on WB may be different from the calculated M.W. due to modifications.

**Product Data:**



**Fig 1.** Western blot of total cell extracts from A) mouse brain, B) mouse thymus, C, E) human HeLa, D, F) human Jurkat; using 2 independent Abs against 2 distinct regions of human GEMIN6 at RT for 2 h.