



Order: (888)-282-5810 (Phone)  
(818)-707-0392 (Fax)  
[order@abiocode.com](mailto:order@abiocode.com)  
Web: [www.Abiocode.com](http://www.Abiocode.com)

---

## **NPR1 (M) Antibody, Rabbit Polyclonal**

**Cat#: R3131-2**

**Quantity: 100 ul**

**Predicted | Observed MW: 119 kDa**

**Lot#: Refer to vial**

**Application: WB**

**Uniprot ID: P16066**

### **Background:**

Atrial natriuretic peptide receptor 1 (NPR1) is a single pass type I membrane protein. NPR1 is a receptor for the atrial natriuretic peptide NPPA/ANP and the brain natriuretic peptide NPPB/BNP, which are potent vasoactive hormones playing a key role in cardiovascular homeostasis. NPR1 has guanylate cyclase activity upon binding of the ligand.

### **Other Names:**

Atrial natriuretic peptide receptor 1, Atrial natriuretic peptide receptor type A, ANP-A, ANPR-A, NPR-A, Guanylate cyclase A, GC-A

### **Source and Purity:**

Rabbit polyclonal antibodies were produced by immunizing animals with a GST-fusion protein containing the middle region of human NPR1. Antibodies were purified by affinity purification using immunogen.

### **Storage Buffer and Condition:**

Supplied in 1 x PBS (pH 7.4), 100 ug/ml BSA, 40% Glycerol, 0.01% NaN<sub>3</sub>. Store at -20 °C. Stable for 6 months from date of receipt.

### **Species Specificity:**

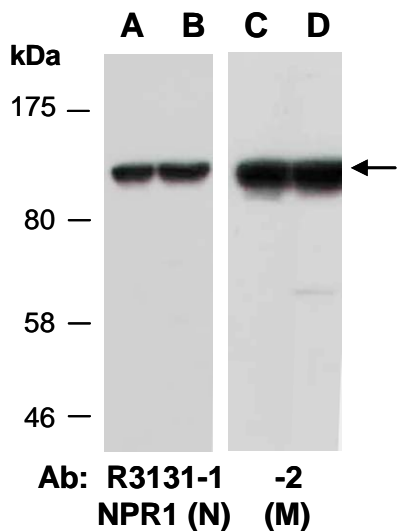
Human

### **Tested Applications:**

WB: 1:1,000-1:3,000 (detect endogenous protein\*)

\*: The apparent protein size on WB may be different from the calculated M.W. due to modifications.

**Product Data:**



**Fig 1.** Western blot of total cell extracts from A, C) human HeLa, B, D) human Jurkat; using 2 independent Abs against 2 distinct regions of human NPR1 at RT for 2 h.