



Order: (888)-282-5810 (Phone)
(818)-707-0392 (Fax)
order@abiocode.com
Web: www.Abiocode.com

DIAPH2 (C2) Antibody, Rabbit Polyclonal

Cat#: R3160-2

Quantity: 100 ul

Predicted | Observed MW: 126 kDa

Lot#: Refer to vial

Application: WB

Uniprot ID: O60879

Background:

Protein diaphanous homolog 2 (DIAPH2) belongs to the diaphanous subfamily of the formin homology family of proteins, and it may play a role in the development and normal function of the ovaries. Defects in this gene have been linked to premature ovarian failure 2. Alternatively spliced transcript variants encoding different isoforms have been identified. DIAPH2 is involved in the regulation of endosome dynamics, and is implicated in a novel signal transduction pathway, in which isoform 3 and CSK are sequentially activated by RHOD to regulate the motility of early endosomes through interactions with the actin cytoskeleton.

Other Names:

Protein diaphanous homolog 2, Diaphanous-related formin-2, DRF2, DIA

Source and Purity:

Rabbit polyclonal antibodies were produced by immunizing animals with a GST-fusion protein containing the C-terminal region of human DIAPH2. Antibodies were purified by affinity purification using immunogen.

Storage Buffer and Condition:

Supplied in 1 x PBS (pH 7.4), 100 ug/ml BSA, 40% Glycerol, 0.01% NaN₃. Store at -20 °C. Stable for 6 months from date of receipt.

Species Specificity:

Human, Mouse

Tested Applications:

WB: 1:1,000-1:3,000 (detect endogenous protein*)

*: The apparent protein size on WB may be different from the calculated M.W. due to modifications.

Product Data:

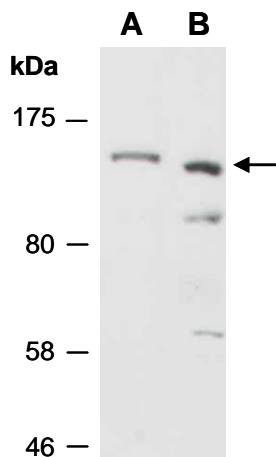


Fig 1. Western blot of total cell extracts from A) mouse thymus, B) human HeLa; using anti-DIAPH2 (C2) (R3160-2) at RT for 2 h.