



Order: (888)-282-5810 (Phone)  
(818)-707-0392 (Fax)  
[order@abiocode.com](mailto:order@abiocode.com)  
Web: [www.Abiocode.com](http://www.Abiocode.com)

---

## **RXFP1 (vPair™) Antibodies**

**Cat#: R2805-vp**

**Lot#: Refer to vial**

**Predicted | Observed M.W.: 87 | 110 kDa**

**Uniprot ID: Q9HBX9**

**Application: WB, IP**

**Quantity:** 50 ul RXFP1 (N) (R2805-1) Rabbit Polyclonal Antibody &

50 ul RXFP1 (C1) (R2805-2) Rabbit Polyclonal Antibody

### **Product Introduction:**

vPair™ antibodies represent a pair of fully characterized antibodies that recognize two different regions of a target protein. The product is developed by Abiocode to address whether the signal observed truly represents the protein of interest, an often encountered issue in antibody-based assays. The use of a pair of fully characterized vPair™ antibodies in the same assay can validate signal specificity since vPair™ antibodies recognize two independent epitopes of the same protein. Different sets of vPair™ antibodies are developed at Abiocode to work with specific applications, including antibody arrays, Western blot, IP-Western, ChIP, IHC, and FACS.

### **Background:**

Relaxin family peptide receptor 1 (RXFP1) is a member of the leucine-rich repeat-containing subgroup of the G protein-coupled 7-transmembrane receptor superfamily. RXFP1 plays a critical role in sperm motility, pregnancy and parturition as a receptor for the protein hormone relaxin. Decreased expression of the RXFP1 gene may play a role in endometriosis. Alternatively spliced transcript variants encoding multiple isoforms have been observed for this gene [provided by RefSeq].

### **Other Names:**

Relaxin receptor 1, Leucine-rich repeat-containing G-protein coupled receptor 7, Relaxin family peptide receptor 1, LGR7, RXFPR1

### **Source and Purity:**

Rabbit polyclonal antibodies were produced by immunizing animals with GST-fusion proteins containing either the N-terminal [RXFP1 (N) (R2805-1)] or the C-terminal [RXFP1 (C1) (R2805-2)] region of human RXFP1. Antibodies were purified by affinity purification using immunogen.

### **Storage Buffer and Condition:**

Supplied in 1 x PBS (pH 7.4), 100 ug/ml BSA, 40% Glycerol, 0.01% NaN<sub>3</sub>. Store at -20 °C. Stable for 6 months from date of receipt.

---

**For research use only. Not for therapeutic or diagnostic purposes.  
Abiocode, Inc., 29397 Agoura Rd., Ste 106, Agoura Hills, CA 91301**

**Species Specificity:**

Human, Mouse

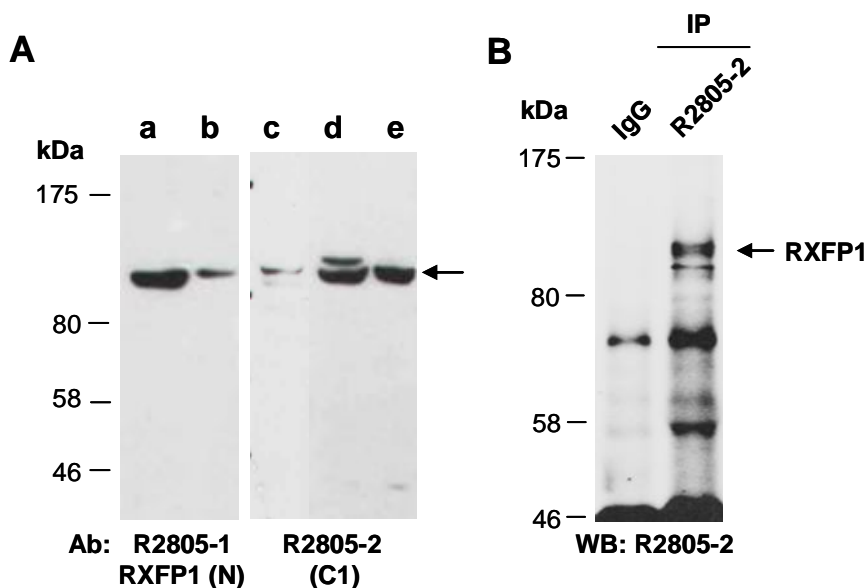
**Tested Applications:**

WB: 1:1,000-1:3,000 (detect endogenous protein\*)

IP: 1:100-1:200

\*: The apparent protein size on WB may be different from the calculated M.W. due to modifications.

**Product Data:**



**Fig 1. A)** Western blot of total cell extracts from a,d. human HeLa, c. mouse brain, b,e. human Jurkat; using 2 independent Abs against 2 distinct regions of human RXFP1 at RT for 2 h. **B)** Total extracts from human HeLa were immunoprecipitated with IgG or anti-RXFP1 (C1) (R2805-2); followed by WB with the same Ab.