



Order: (888)-282-5810 (Phone)
(818)-707-0392 (Fax)
order@abiocode.com
Web: www.Abiocode.com

LARGE (C) Antibody, Rabbit Polyclonal

Cat#: R3183-2

Quantity: 100 ul

Predicted | Observed M.W.: 88 kDa

Lot#: Refer to vial

Application: WB, IP

Uniprot ID: O95461

Background:

Glycosyltransferase-like protein LARGE1 (LARGE) is a member of the N-acetylglucosaminyltransferase family, which participates in glycosylation of alpha-dystroglycan, and may carry out the synthesis of glycoprotein and glycosphingolipid sugar chains. LARGE may also be involved in the addition of a repeated disaccharide unit. Mutations in the LARGE gene cause MDC1D, a novel form of congenital muscular dystrophy with severe mental retardation and abnormal glycosylation of alpha-dystroglycan [provided by RefSeq].

Other Names:

Glycosyltransferase-like protein LARGE1, Acetylglucosaminyltransferase-like 1A, KIAA0609, LARGE1

Source and Purity:

Rabbit polyclonal antibodies were produced by immunizing animals with a GST-fusion protein containing the C-terminal region of human LARGE. Antibodies were purified by affinity purification using immunogen.

Storage Buffer and Condition:

Supplied in 1 x PBS (pH 7.4), 100 ug/ml BSA, 40% Glycerol, 0.01% NaN₃. Store at -20 °C. Stable for 6 months from date of receipt.

Species Specificity:

Human, Mouse

Tested Applications:

WB: 1:1,000-1:3,000 (detect endogenous protein*)

IP: 1:100-1:200

*: The apparent protein size on WB may be different from the calculated M.W. due to modifications.

Product Data:

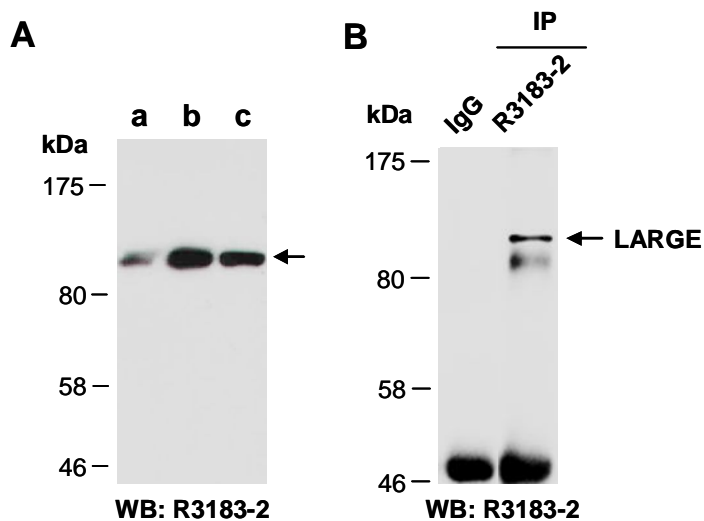


Fig 1. A) Western blot of total cell extracts from a. mouse thymus, b. human HeLa, c. human Jurkat; using anti-LARGE (C) (R3183-2) at RT for 2 h.
B) Total extracts from human Jurkat were immunoprecipitated (IP) with IgG or anti-LARGE (C) (R3183-2); followed by WB with the same Ab.