



Order: (888)-282-5810 (Phone)  
(818)-707-0392 (Fax)  
[order@abiocode.com](mailto:order@abiocode.com)  
Web: [www.Abiocode.com](http://www.Abiocode.com)

---

## **LRRC7 (M) Antibody, Rabbit Polyclonal**

**Cat#: R0808-1**

**Quantity: 100 ul**

**Predicted | Observed M.W.: 172 kDa**

**Lot#: Refer to vial**

**Application: WB, IP**

**Uniprot ID: Q96NW7**

### **Background:**

LRRC7 is required for normal synaptic spine architecture and function. LRRC7 is also necessary for DISC1 and GRM5 localization to postsynaptic density complexes and for both N-methyl D-aspartate receptor-dependent and metabotropic glutamate receptor-dependent long term depression. LRRC7 interacts with CAMKII, CNKSR2, DLG4, and CTNND2/Catenin delta-2. LRRC7 forms a complex with N-cadherin through CTNND2.

### **Other Names:**

Leucine-rich repeat-containing protein 7, Densin-180, Protein LAP1, KIAA1365, LAP1

### **Source and Purity:**

Rabbit polyclonal antibodies were produced by immunizing animals with a GST-fusion protein containing the middle region of human LRRC7. Antibodies were purified by affinity purification using immunogen.

### **Storage Buffer and Condition:**

Supplied in 1 x PBS (pH 7.4), 100 ug/ml BSA, 40% Glycerol, 0.01% NaN<sub>3</sub>. Store at -20 °C. Stable for 6 months from date of receipt.

### **Species Specificity:**

Human, Mouse

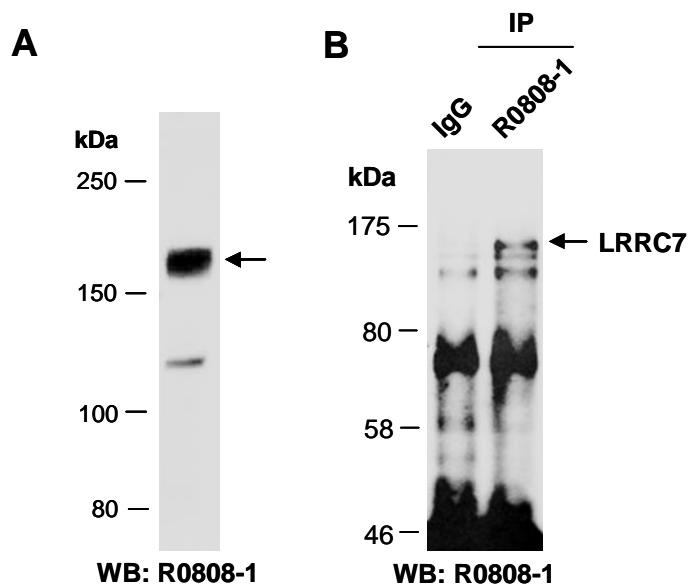
### **Tested Applications:**

WB: 1:1,000-1:3,000 (detect endogenous protein\*)

IP: 1:100-1:200

\*: The apparent protein size on WB may be different from the calculated M.W. due to modifications.

**Product Data:**



**Fig 1. A)** Western blot of total cell extracts from mouse brain; using anti-LRRC7 (M) (R0808-1) at RT for 2 h. **B)** Total extracts from mouse brain were immunoprecipitated with IgG or anti-LRRC7 (M) (R0808-1); followed by WB with the same Ab.