



Order: (888)-282-5810 (Phone)
(818)-707-0392 (Fax)
order@abiocode.com
Web: www.Abiocode.com

SDC1 (C) Antibody, Rabbit Polyclonal

Cat#: R1100-2

Quantity: 100 ul

Predicted | Observed MW: 32 | 100, 160-200 kDa

Lot#: Refer to vial

Application: WB

Uniprot ID: P18827

Background:

Syndecan-1 (SDC1) is a single-pass type I membrane protein belonging to the syndecan proteoglycan family. SDC1 is a cell surface proteoglycan that bears both heparan sulfate and chondroitin sulfate and links the cytoskeleton to the interstitial matrix. The observed M.W. of SDC1 ranges from 100 to 200 kDa.

Other Names:

Syndecan-1, SYND1, CD138, SDC

Source and Purity:

Rabbit polyclonal antibodies were produced by immunizing animals with a GST-fusion protein containing the C-terminal region of human SDC1. Antibodies were purified by affinity purification using immunogen.

Storage Buffer and Condition:

Supplied in 1 x PBS (pH 7.4), 100 ug/ml BSA, 40% Glycerol, 0.01% NaN₃. Store at -20 °C. Stable for 6 months from date of receipt.

Species Specificity:

Human, Mouse

Tested Applications:

WB: 1:1,000-1:3,000 (detect endogenous protein*)

*: The apparent protein size on WB may be different from the calculated M.W. due to modifications.

Product Data:

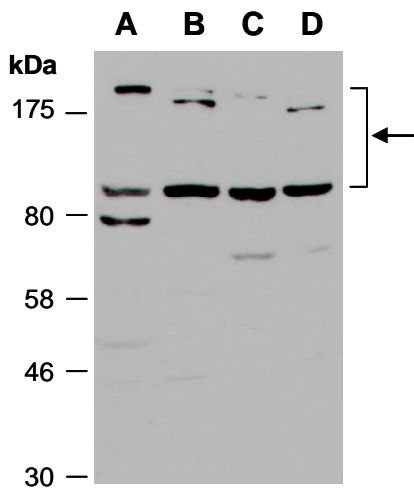


Fig 1. Western blot of total cell extracts from A) mouse brain, B) mouse thymus, C) human HeLa, D) human Jurkat; using anti-SDC1 (C) (R1100-2) at RT for 2 h. This antibody recognizes the 100 kD and 180-200 kD forms of SDC1.