



Order: (888)-282-5810 (Phone)
(818)-707-0392 (Fax)
order@abiocode.com
Web: www.Abiocode.com

TET2 (N2) Antibody, Mouse Monoclonal

Cat#: M1086-4a

Application: WB, Flow cyt

Predicted M.W.: 224 kDa

Isotype: Mouse IgG1

Lot#: Refer to vial

Quantity: 100 ug

Uniprot ID: Q4JK59

Clone: 10F1

Background:

TET2 is a methylcytosine dioxygenase that catalyzes the conversion of methylcytosine (5mC) to 5-hydroxymethylcytosine (5hmC). 5-hydroxymethylcytosine may influence chromatin structure and recruit specific factors or may constitute an intermediate component in cytosine demethylation. TET2 plays an important role in myelopoiesis, and defects in TET2 gene have been associated with several myeloproliferative disorders.

Other Names:

Methylcytosine dioxygenase TET2, KIAA1546

Source and Purity:

Mouse monoclonal antibodies were produced by immunizing animals with a GST-fusion protein containing the N-terminal region of mouse TET2. Antibodies were purified by Caprylic Acid-Ammonium Sulfate precipitation.

Storage Buffer and Condition:

Supplied in 1 x PBS (pH 7.4), 40% Glycerol, 0.02% Thimerosal. Store at -20 °C. Stable for 6 months from date of receipt.

Tested Applications:

WB: 1:1,000-1:3,000 (detect endogenous protein*)

Flow cytometry: 1:100-1:400

*: The apparent protein size on WB may be different from the calculated M.W. due to modifications.

Species Specificity:

Mouse

Product Data:

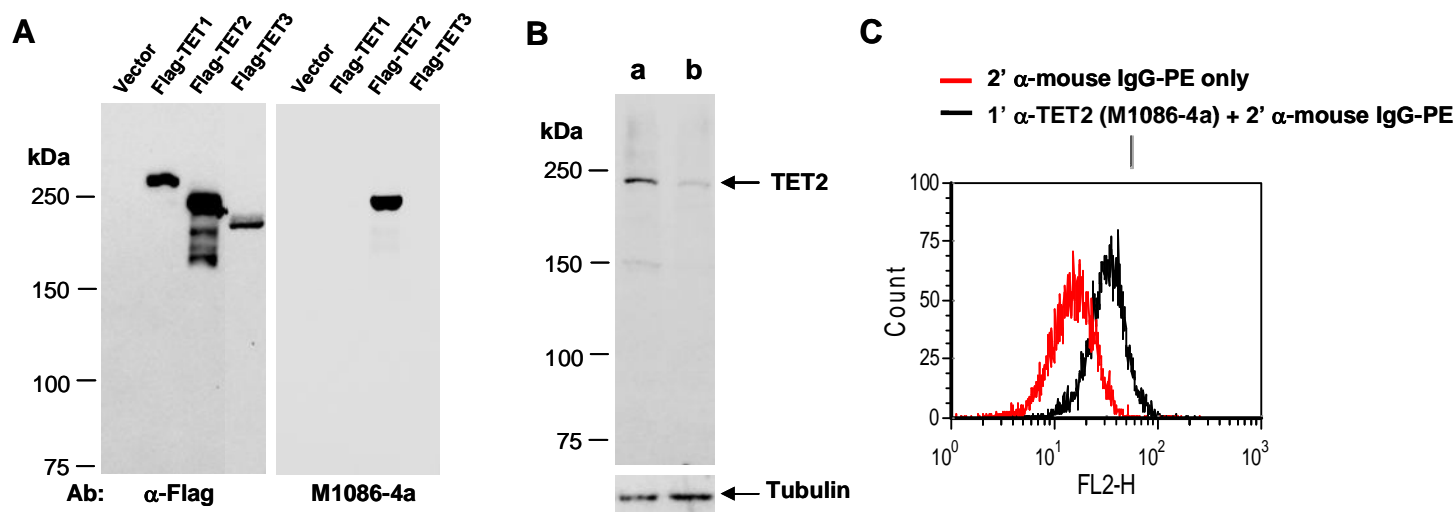


Fig 1. (A) Western blot of total cell extracts from human 293 T cells transfected with the empty vector, or Flag-tagged murine TET1, TET2 or TET3; using indicated Abs at RT for 2h. **(B)** Western blot of total cell extracts from mouse MEF cells containing a control shRNA (a) or an shRNA specific for murine TET2 (b); using anti-TET2 (N2) (M1086-4a) or anti-Tubulin (N) (R0267-1) at RT for 2h. **(C)** Flow cytometry was performed with mouse thymocytes, using PE-labeled 2' anti-mouse IgG only (red line), or anti-TET2 (N2) (M1086-4a) followed by 2' anti-mouse IgG-PE (black line).