



Order: (888)-282-5810 (Phone)  
(818)-707-0392 (Fax)  
[order@abiocode.com](mailto:order@abiocode.com)  
Web: [www.Abiocode.com](http://www.Abiocode.com)

---

## **KANSL1 (C1) Antibody, Rabbit Polyclonal**

**Cat#: R0608-2**

**Quantity: 100 ul**

**Predicted | Observed M.W.: 121 kDa**

**Lot#: Refer to vial**

**Application: WB**

**Uniprot ID: Q7Z3B3**

### **Background:**

KAT8 regulatory NSL complex subunit 1 (KANSL1), as part of the NSL complex, is involved in acetylation of nucleosomal histone H4 on several lysine residues and therefore may be involved in the regulation of transcription.

### **Other Names:**

KAT8 regulatory NSL complex subunit 1, MLL1/MLL complex subunit KANSL1, MSL1 homolog 1, hMSL1v1, NSL complex protein NSL1, Non-specific lethal 1 homolog, KIAA1267, MSL1V1, NSL1

### **Source and Purity:**

Rabbit polyclonal antibodies were produced by immunizing animals with a GST-fusion protein containing the C-terminal region of human KANSL1. Antibodies were purified by affinity purification using immunogen.

### **Storage Buffer and Condition:**

Supplied in 1 x PBS (pH 7.4), 100 ug/ml BSA, 40% Glycerol, 0.01% NaN<sub>3</sub>. Store at -20 °C. Stable for 6 months from date of receipt.

### **Species Specificity:**

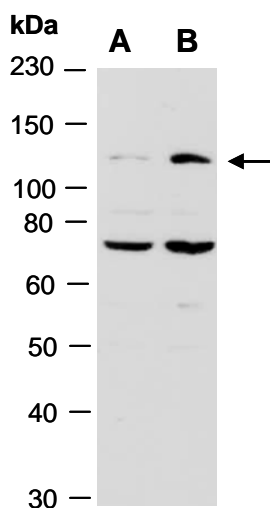
Human, Mouse

### **Tested Applications:**

WB: 1:1,000-1:3,000 (detect endogenous protein\*)

\*: The apparent protein size on WB may be different from the calculated M.W. due to modifications.

**Product Data:**



**Fig 1.** Western blot of total cell extracts from A) human HeLa, B) human Jurkat; using anti-KANSL1 (C1) (R0608-2) at RT for 2 h.