



Order: (888)-282-5810 (Phone)
(818)-707-0392 (Fax)
order@abiocode.com
Web: www.Abiocode.com

CADM1 (C) Antibody, Rabbit Polyclonal

Cat#: R0952-2

Quantity: 100 ul

Predicted | Observed MW: 49 kDa

Lot#: Refer to vial

Application: WB

Uniprot ID: Q9BY67

Background:

Cell adhesion molecule 1 (CADM1) is a single-pass type I membrane protein belonging to the nectin family. CADM1 mediates homophilic cell-cell adhesion in a Ca^{2+} -independent manner. CADM1 also mediates heterophilic cell-cell adhesion with CADM3 and PVRL3 in a Ca^{2+} -independent manner. CADM1 acts as a tumor suppressor in non-small-cell lung cancer (NSCLC) cells. Interaction with CRTAM promotes natural killer (NK) cell cytotoxicity and interferon-gamma (IFN-gamma) secretion by CD8+ cells in vitro as well as NK cell-mediated rejection of tumors expressing CADM3 in vivo.

Other Names:

Cell adhesion molecule 1, Immunoglobulin superfamily member 4, IgSF4, Nectin-like protein 2, NECL-2, Spermatogenic immunoglobulin superfamily, SgIgSF, Synaptic cell adhesion molecule, SynCAM, Tumor suppressor in lung cancer 1, TSLC-1, IGSF4, IGSF4A, NECL2, SYNCAM, TSLC1

Source and Purity:

Rabbit polyclonal antibodies were produced by immunizing animals with a GST-fusion protein containing the C-terminal region of human CADM1. Antibodies were purified by affinity purification using immunogen.

Storage Buffer and Condition:

Supplied in 1 x PBS (pH 7.4), 100 ug/ml BSA, 40% Glycerol, 0.01% NaN_3 . Store at $-20\text{ }^\circ\text{C}$. Stable for 6 months from date of receipt.

Species Specificity:

Human, Mouse

Tested Applications:

WB: 1:1,000-1:3,000 (detect endogenous protein*)

*: The apparent protein size on WB may be different from the calculated M.W. due to modifications.

Product Data:

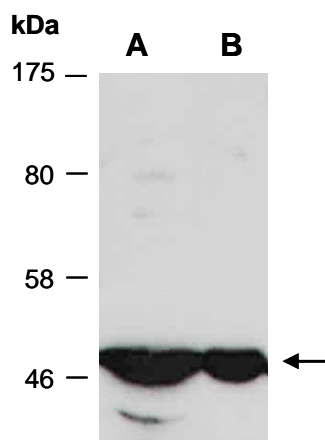


Fig 1. Western blot of total cell extracts from A) mouse brain; B) human HeLa; using anti-CADM1 (C) (R0952-2) at RT for 2 h.