



Order: (888)-282-5810 (Phone)
(818)-707-0392 (Fax)
order@abiocode.com
Web: www.Abiocode.com

CXCR6 (C) Antibody, Rabbit Polyclonal

Cat#: R0979-2

Quantity: 100 ul

Predicted | Observed MW: 39 kDa

Lot#: Refer to vial

Application: WB

Uniprot ID: O00574

Background:

C-X-C chemokine receptor type 6 (CXCR6) is a multi-pass membrane protein belonging to the G-protein coupled receptor 1 family. CXCR6 is a receptor for the C-X-C chemokine CXCL16. CXCR6 is used as a coreceptor by SIVs and by strains of HIV-2 and m-tropic HIV-1.

Other Names:

C-X-C chemokine receptor type 6, CXC-R6, CXCR-6, CDw186, G-protein coupled receptor STRL33, G-protein coupled receptor bonzo, CD186, BONZO, STRL33, TYMSTR

Source and Purity:

Rabbit polyclonal antibodies were produced by immunizing animals with a GST-fusion protein containing the C-terminal region of human CXCR6. Antibodies were purified by affinity purification using immunogen.

Storage Buffer and Condition:

Supplied in 1 x PBS (pH 7.4), 100 ug/ml BSA, 40% Glycerol, 0.01% NaN₃. Store at -20 °C. Stable for 6 months from date of receipt.

Species Specificity:

Human

Tested Applications:

WB: 1:1,000-1:3,000 (detect endogenous protein*)

*: The apparent protein size on WB may be different from the calculated M.W. due to modifications.

Product Data:

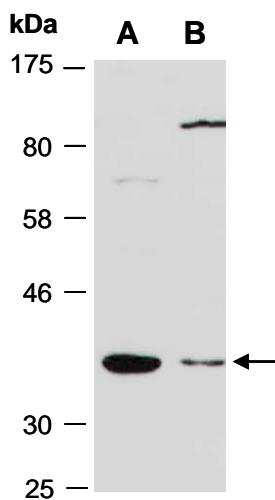


Fig 1. Western blot of total cell extracts from A) human HeLa, B) human Jurkat; using anti-CXCR6 (C) (R0979-2) at RT for 2 h.