



Order: (888)-282-5810 (Phone)  
(818)-707-0392 (Fax)  
[order@abiocode.com](mailto:order@abiocode.com)  
Web: [www.Abiocode.com](http://www.Abiocode.com)

---

## **MMP24 (C) Antibody, Rabbit Polyclonal**

**Cat#: R1039-2**

**Quantity: 100 ul**

**Predicted | Observed M.W.: 73, 57 | 65 kDa**

**Lot#: Refer to vial**

**Application: WB**

**Uniprot ID: Q9Y5R2**

### **Background:**

Matrix metalloproteinase-24 (MMP24) is a single-pass type I cell membrane protein that belongs to the peptidase M10A family. The 73 kD full length MMP24 can be cleaved into the mature form with a predicted M.W. of 57 kD. MMP24 activates progelatinase A. It may also be a proteoglycanase involved in the degradation of proteoglycans, such as dermatan sulfate and chondroitin sulfate proteoglycans. MMP24 cleaves partially fibronectin, but not collagen type I, nor laminin.

### **Other Names:**

Matrix metalloproteinase-24, MMP-24, Membrane-type matrix metalloproteinase 5, MT-MMP 5, MTMMP5, Membrane-type-5 matrix metalloproteinase, MT5-MMP, MT5MMP

### **Source and Purity:**

Rabbit polyclonal antibodies were produced by immunizing animals with a GST-fusion protein containing the C-terminal region of human MMP24. Antibodies were purified by affinity purification using immunogen.

### **Storage Buffer and Condition:**

Supplied in 1 x PBS (pH 7.4), 100 ug/ml BSA, 40% Glycerol, 0.01% NaN<sub>3</sub>. Store at -20 °C. Stable for 6 months from date of receipt.

### **Species Specificity:**

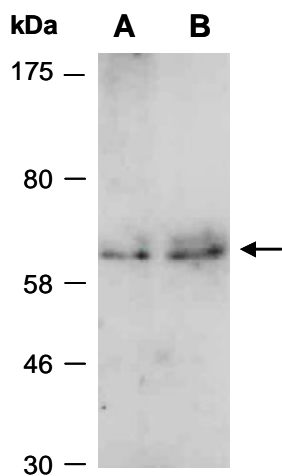
Human

### **Tested Applications:**

WB: 1:1,000-1:3,000 (detect endogenous protein\*)

\*: The apparent protein size on WB may be different from the calculated M.W. due to modifications.

**Product Data:**



**Fig 1.** Western blot of total cell extracts from A) human HeLa, B) human Jurkat; using anti-MMP24 (C) (R1039-2) at RT for 2 h.