



Order: (888)-282-5810 (Phone)  
(818)-707-0392 (Fax)  
[order@abiocode.com](mailto:order@abiocode.com)  
Web: [www.Abiocode.com](http://www.Abiocode.com)

---

## **MAGI1 (N) Antibody, Rabbit Polyclonal**

**Cat#: R1657-1**

**Quantity: 100 ul**

**Predicted | Observed M.W.: 165 | 200 kDa**

**Lot#: Refer to vial**

**Application: WB**

**Uniprot ID: Q96QZ7**

### **Background:**

Membrane-associated guanylate kinase, WW and PDZ domain-containing protein 1 (MAGI1) is a peripheral membrane protein that may play a role as scaffolding protein at cell-cell junctions. MAGI1 may also regulate acid-induced ASIC3 currents by modulating its expression at the cell surface.

### **Other Names:**

Membrane-associated guanylate kinase, WW and PDZ domain-containing protein 1, Atrophin-1-interacting protein 3, AIP-3, BAI1-associated protein 1, BAP-1, Membrane-associated guanylate kinase inverted 1, MAGI-1, Trinucleotide repeat-containing gene 19 protein, WW domain-containing protein 3, WWP3, AIP3, BAIAP1, BAP1, TNRC19

### **Source and Purity:**

Rabbit polyclonal antibodies were produced by immunizing animals with a GST-fusion protein containing the N-terminal region of human MAGI1. Antibodies were purified by affinity purification using immunogen.

### **Storage Buffer and Condition:**

Supplied in 1 x PBS (pH 7.4), 100 ug/ml BSA, 40% Glycerol, 0.01% NaN<sub>3</sub>. Store at -20 °C. Stable for 6 months from date of receipt.

### **Species Specificity:**

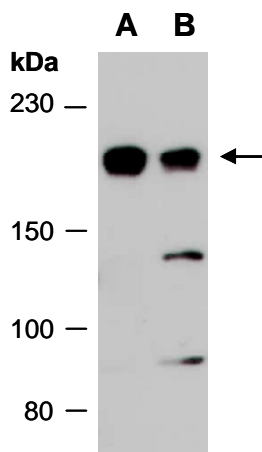
Human, Mouse

### **Tested Applications:**

WB: 1:1,000-1:3,000 (detect endogenous protein\*)

\*: The apparent protein size on WB may be different from the calculated M.W. due to modifications.

**Product Data:**



**Fig 1.** Western blot of total cell extracts  
A) mouse thymus, B) human HeLa; using  
anti-MAGI1 (N) (R1657-1) at RT for 2 h.