



Order: (888)-282-5810 (Phone)
(818)-707-0392 (Fax)
order@abiocode.com
Web: www.Abiocode.com

CDK19 (C2) Antibody, Rabbit Polyclonal

Cat#: R3166-2

Quantity: 100 ul

Predicted | Observed M.W.: 57 | 60 kDa

Lot#: Refer to vial

Application: WB

Uniprot ID: Q9BWU1

Background:

Cyclin-dependent kinase 19 (CDK19) belongs to the protein kinase superfamily, the CMGC Ser/Thr protein kinase family, and the CDC2/CDKX subfamily.

Other Names:

Cyclin-dependent kinase 19, CDC2-related protein kinase 6, Cell division cycle 2-like protein kinase 6, Cell division protein kinase 19, Cyclin-dependent kinase 11, Death-preventing kinase, DC2L6, CDK11, KIAA1028

Source and Purity:

Rabbit polyclonal antibodies were produced by immunizing animals with a GST-fusion protein containing the C-terminal region of human CDK19. Antibodies were purified by affinity purification using immunogen.

Storage Buffer and Condition:

Supplied in 1 x PBS (pH 7.4), 100 ug/ml BSA, 40% Glycerol, 0.01% NaN₃. Store at -20 °C. Stable for 6 months from date of receipt.

Species Specificity:

Human, Mouse

Tested Applications:

WB: 1:1,000-1:3,000 (detect endogenous protein*)

*: The apparent protein size on WB may be different from the calculated M.W. due to modifications.

Product Data:

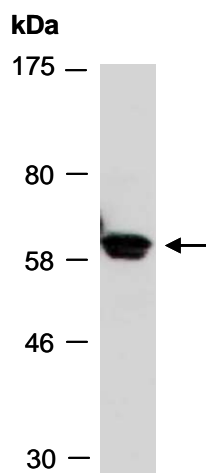


Fig 1. Western blot of total cell extracts from mouse thymus,; using anti-CDK19 (C2) (R3166-2) at RT for 2 h.