



Order: (888)-282-5810 (Phone)  
(818)-707-0392 (Fax)  
[order@abiocode.com](mailto:order@abiocode.com)  
Web: [www.Abiocode.com](http://www.Abiocode.com)

---

## ARSA (N) Antibody, Rabbit Polyclonal

**Cat#:** R3207-1

**Quantity:** 100 ul

**Predicted | Observed M.W.:** 54 | 60 kDa

**Lot#:** Refer to vial

**Application:** WB

**Uniprot ID:** P15289

### **Background:**

Arylsulfatase A (ARSA) belongs to the sulfatase family and is located to the lysosome. ARSA hydrolyzes cerebroside sulfate to cerebroside and sulfate. Defects in ARSA lead to metachromatic leucodystrophy (MLD), a progressive demyelination disease which results in a variety of neurological symptoms and ultimately death.

### **Other Names:**

Arylsulfatase A, ASA, Cerebroside-sulfatase

### **Source and Purity:**

Rabbit polyclonal antibodies were produced by immunizing animals with a GST-fusion protein containing the N-terminal region of human ARSA. Antibodies were purified by affinity purification using immunogen.

### **Storage Buffer and Condition:**

Supplied in 1 x PBS (pH 7.4), 100 ug/ml BSA, 40% Glycerol, 0.01% NaN<sub>3</sub>. Store at -20 °C. Stable for 6 months from date of receipt.

### **Species Specificity:**

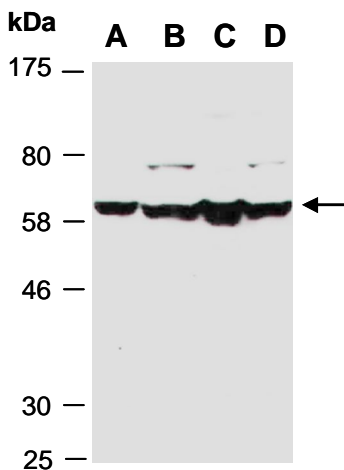
Human, Mouse

### **Tested Applications:**

WB: 1:1,000-1:3,000 (detect endogenous protein\*)

\*: The apparent protein size on WB may be different from the calculated M.W. due to modifications.

**Product Data:**



**Fig 1.** Western blot of total cell extracts from A) mouse brain, B) mouse thymus, C) human HeLa, D) human Jurkat; using anti-ARSA (N) (R3207-1) at RT for 2 h.