



Order: (888)-282-5810 (Phone)
(818)-707-0392 (Fax)
order@abiocode.com
Web: www.Abiocode.com

XBP1 (N2) Antibody, Rabbit Polyclonal

Cat#: R0601-2

Quantity: 100 ul

Predicted | Observed MW: 29, 40 | 40, 45 kDa

Lot#: Refer to vial

Application: WB

Uniprot ID: O35426

Background:

X-box-binding protein 1 (XBP1) belongs to the bZIP family. XBP1 is a transcription factor essential for hepatocyte growth, the differentiation of plasma cells, the immunoglobulin secretion, and the unfolded protein response (UPR). XBP1 acts during endoplasmic reticulum stress (ER) by activating unfolded protein response (UPR) target genes via direct binding to the UPR element (UPRE). XBP1 binds DNA preferably to the CRE-like element 5'-GATGACGTG[TG]N₃[AT]T-3', and also to some TPA response elements (TRE). Two isoforms of XBP1 also known as XBP-1S and XBP1-1U have been identified. Isoform 2 (XBP-1S) is involved in controlling the production of interleukin-6.

Other Names:

X-box-binding protein 1, XBP-1, Tax-responsive element-binding protein 5 homolog, Treb5

Source and Purity:

Rabbit polyclonal antibodies were produced by immunizing animals with a GST-fusion protein containing N-terminal region of murine XBP1. Antibodies were purified by affinity purification using immunogen.

Storage Buffer and Condition:

Supplied in 1 x PBS (pH 7.4), 100 ug/ml BSA, 40% Glycerol, 0.01% NaN₃. Store at -20 °C. Stable for 6 months from date of receipt.

Species Specificity:

Human, Mouse

Tested Applications:

WB: 1:1,000-1:3,000 (detect endogenous protein*)

*: The apparent protein size on WB may be different from the calculated M.W. due to modifications.

Product Data:

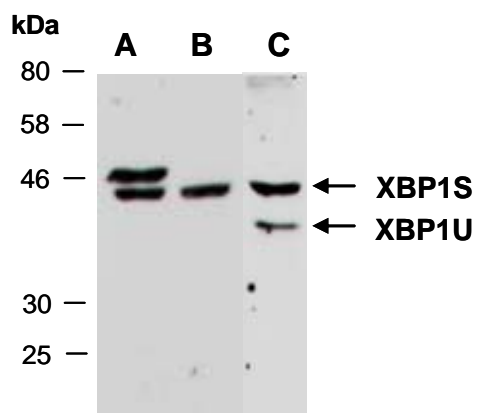


Fig 1. Western blot of total cell extracts from A) human HeLa; B) human Jurkat; C) mouse brain; using anti-XBP1 (N2) (R0601-2) at RT for 2 h.