



Order: (888)-282-5810 (Phone)  
(818)-707-0392 (Fax)  
order@abiocode.com  
Web: www.Abiocode.com

---

## ARIH2 (C) Antibody, Rabbit Polyclonal

**Cat#: R1156-2**

**Quantity: 100 ul**

**Predicted | Observed M.W.: 58 | 68 kDa**

**Lot#: Refer to vial**

**Application: WB**

**Uniprot ID: O95376**

### **Background:**

E3 ubiquitin-protein ligase ARIH2 belongs to the RBR family and Ariadne subfamily. It is involved in protein modification and protein ubiquitination. ARIH2 mediates 'Lys-48'-and 'Lys-63'-linked polyubiquitination and subsequent proteasomal degradation of modified proteins. It may play a role in myelopoiesis.

### **Other Names:**

E3 ubiquitin-protein ligase ARIH2, Protein ariadne-2 homolog, ARI-2, Triad1 protein, ARI2, TRIAD1

### **Source and Purity:**

Rabbit polyclonal antibodies were produced by immunizing animals with a GST-fusion protein containing the C-terminal region of human ARIH2. Antibodies were purified by affinity purification using immunogen.

### **Storage Buffer and Condition:**

Supplied in 1 x PBS (pH 7.4), 100 ug/ml BSA, 40% Glycerol, 0.01% NaN<sub>3</sub>. Store at -20 °C. Stable for 6 months from date of receipt.

### **Species Specificity:**

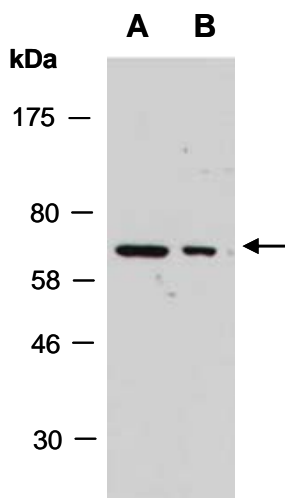
Human, Mouse

### **Tested Applications:**

WB: 1:1,000-1:3,000 (detect endogenous protein\*)

\*: The apparent protein size on WB may be different from the calculated M.W. due to modifications.

**Product Data:**



**Fig 1.** Western blot of total cell extracts from A) mouse thymus; B) human HeLa; using anti-ARIH2 (C) (R1156-2) at RT for 2 h.