



Order: (888)-282-5810 (Phone)
(818)-707-0392 (Fax)
order@abiocode.com
Web: www.Abiocode.com

CDX1 (M) Antibody, Rabbit Polyclonal

Cat#: R1447-1

Quantity: 100 ul

Predicted | Observed M.W.: 28 | 30 kDa

Lot#: Refer to vial

Application: WB

Uniprot ID: P47902

Background:

Homeobox protein CDX-1 (CDX1) belongs to the Caudal homeobox family and could play a role in the terminal differentiation of the intestine.

Other Names:

Homeobox protein CDX-1, Caudal-type homeobox protein 1

Source and Purity:

Rabbit polyclonal antibodies were produced by immunizing animals with a GST-fusion protein containing the middle region of human CDX1. Antibodies were purified by affinity purification using immunogen.

Storage Buffer and Condition:

Supplied in 1 x PBS (pH 7.4), 100 ug/ml BSA, 40% Glycerol, 0.01% NaN₃. Store at -20 °C. Stable for 6 months from date of receipt.

Species Specificity:

Human

Tested Applications:

WB: 1:1,000-1:3,000 (detect endogenous protein*)

*: The apparent protein size on WB may be different from the calculated M.W. due to modifications.

Product Data:

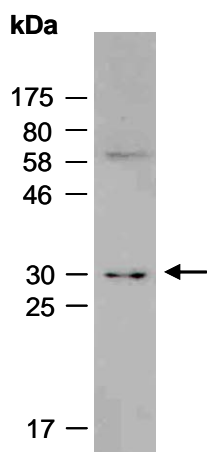


Fig 1. Western blot of total cell extracts from human Jurkat; using anti-CDX1 (M) (R1447-1) at RT for 2 h.