



Order: (888)-282-5810 (Phone)
(818)-707-0392 (Fax)
order@abiocode.com
Web: www.Abiocode.com

TPTE2 (C) Antibody, Rabbit Polyclonal

Cat#: R1823-1

Quantity: 100 ul

Predicted | Observed M.W.: 61 | 52, 61 kDa

Lot#: Refer to vial

Application: WB

Uniprot ID: Q6XPS3

Background:

Phosphatidylinositol 3,4,5-trisphosphate 3-phosphatase TPTE2 (TPTE2) is a multi-pass membrane protein and a member of a large class of membrane-associated phosphatases with substrate specificity for the 3-position phosphate of inositol phospholipids. Several isoforms of TPTE2 have been identified. Isoform 3 is expressed in testis, brain and stomach while isoform 4 seems to be testis-specific.

Other Names:

Phosphatidylinositol 3,4,5-trisphosphate 3-phosphatase TPTE2, TPIP, Lipid phosphatase TPIP, TPTE and PTEN homologous inositol lipid phosphatase, Transmembrane phosphoinositide 3-phosphatase and tensin homolog 2

Source and Purity:

Rabbit polyclonal antibodies were produced by immunizing animals with a GST-fusion protein containing the C-terminal region of human TPTE2. Antibodies were purified by affinity purification using immunogen.

Storage Buffer and Condition:

Supplied in 1 x PBS (pH 7.4), 100 ug/ml BSA, 40% Glycerol, 0.01% NaN₃. Store at -20 °C. Stable for 6 months from date of receipt.

Species Specificity:

Human, Mouse

Tested Applications:

WB: 1:1,000-1:3,000 (detect endogenous protein*)

*: The apparent protein size on WB may be different from the calculated M.W. due to modifications.

Product Data:

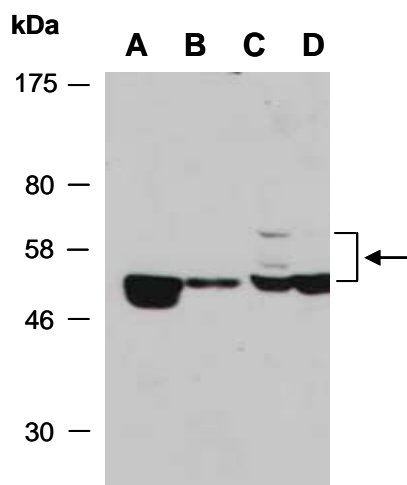


Fig 1. Western blot of total cell extracts from A) mouse brain; B) mouse thymus; C) human HeLa; D) human Jurkat; using anti-TPTE2 (C1) (R1823-1) at RT for 2 h. The predominant 52 kD band may be isoform 3 (also known as TPIP-alpha).