



Order: (888)-282-5810 (Phone)
(818)-707-0392 (Fax)
order@abiocode.com
Web: www.Abiocode.com

betatrophin (N) Antibody, Rabbit Polyclonal

Cat#: R3154-1

Quantity: 100 ul

Predicted | Observed M.W.: 22 | 27 kDa

Lot#: Refer to vial

Application: WB

Uniprot ID: Q6UXH0

Background:

C19orf80 (betatrophin) is a hormone that specifically promotes pancreatic beta cell proliferation and beta cell mass expansion, thereby improving glucose tolerance. Betatrophin promotes pancreatic beta cell proliferation without insulin resistance. Additionally, betatrophin acts as a blood lipid regulator by regulating serum triglyceride levels; possibly by promoting ANGPTL3 cleavage.

Other Names:

C19orf80, Angiotensin-like protein 8, Lipasin, Angptl8

Source and Purity:

Rabbit polyclonal antibodies were produced by immunizing animals with a GST-fusion protein containing the N-terminal region of human betatrophin. Antibodies were purified by affinity purification using immunogen.

Storage Buffer and Condition:

Supplied in 1 x PBS (pH 7.4), 100 ug/ml BSA, 40% Glycerol, 0.01% NaN₃. Store at -20 °C. Stable for 6 months from date of receipt.

Species Specificity:

Human

Tested Applications:

WB: 1:1,000-1:3,000 (detect endogenous protein*)

*: The apparent protein size on WB may be different from the calculated M.W. due to modifications.

Product Data:

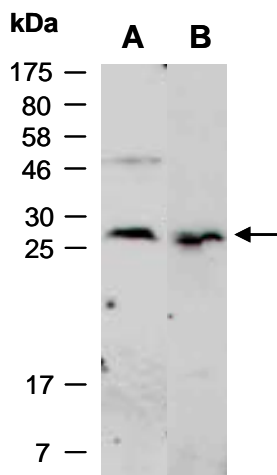


Fig 1. Western blot of total cell extracts from A) human HeLa; B) human Jurkat; using anti-beta-trophin (N) (R3154-1) at RT for 2 h.