



Order: (888)-282-5810 (Phone)  
(818)-707-0392 (Fax)  
[order@abiocode.com](mailto:order@abiocode.com)  
Web: [www.Abiocode.com](http://www.Abiocode.com)

---

## **GEN1 (N) Antibody, Rabbit Polyclonal**

**Cat#: R3254-1**

**Quantity: 100 ul**

**Predicted | Observed M.W.: 103 kDa**

**Lot#: Refer to vial**

**Application: WB**

**Uniprot ID: Q17RS7**

### **Background:**

Flap endonuclease GEN homolog 1 (GEN1) belongs to the XPG/RAD2 endonuclease family and the GEN subfamily. GEN1 is an endonuclease which resolves Holliday junctions by the introduction of symmetrically related cuts across the junction point, to produce nicked duplex products in which the nicks can be readily ligated. Four-way DNA intermediates, also known as Holliday junctions, are formed during homologous recombination and DNA repair, and their resolution is necessary for proper chromosome segregation.

### **Other Names:**

Flap endonuclease GEN homolog 1

### **Source and Purity:**

Rabbit polyclonal antibodies were produced by immunizing animals with a GST-fusion protein containing the N-terminal region of human GEN1. Antibodies were purified by affinity purification using immunogen.

### **Storage Buffer and Condition:**

Supplied in 1 x PBS (pH 7.4), 100 ug/ml BSA, 40% Glycerol, 0.01% NaN<sub>3</sub>. Store at -20 °C. Stable for 6 months from date of receipt.

### **Species Specificity:**

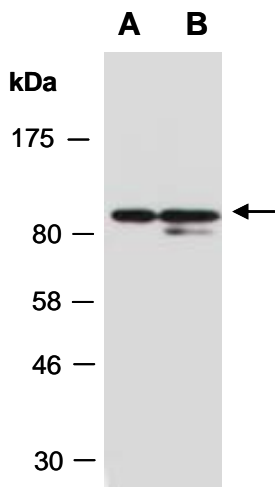
Human

### **Tested Applications:**

WB: 1:1,000-1:3,000 (detect endogenous protein\*)

\*: The apparent protein size on WB may be different from the calculated M.W. due to modifications.

**Product Data:**



**Fig 1.** Western blot of total cell extracts from A) human HeLa; B) human Jurkat; using anti-GEN1 (N) (R3254-1) at RT for 2 h.