



Order: (888)-282-5810 (Phone)  
(818)-707-0392 (Fax)  
[order@abiocode.com](mailto:order@abiocode.com)  
Web: [www.Abiocode.com](http://www.Abiocode.com)

---

## **KDM2B (N) Antibody, Rabbit Polyclonal**

**Cat#: R0863-1**

**Quantity: 100 ul**

**Predicted | Observed MW: 153 | 200 kDa**

**Lot#: Refer to vial**

**Application: WB**

**Uniprot ID: Q8NHM5**

### **Background:**

Lysine-specific demethylase 2B (KDM2B) belongs to the JHDM1 histone demethylase family. KDM2B is a histone demethylase that demethylates 'Lys-4' and 'Lys-36' of histone H3, thereby playing a central role in histone code. Preferentially demethylates trimethylated H3 'Lys-4' and dimethylated H3 'Lys-36' residue while it has weak or no activity for mono- and tri-methylated H3 'Lys-36'. KDM2B preferentially binds the transcribed region of ribosomal RNA and represses the transcription of ribosomal RNA genes which inhibits cell growth and proliferation. KDM2B may also serve as a substrate-recognition component of the SCF (SKP1-CUL1-F-box protein)-type E3 ubiquitin ligase complex.

### **Other Names:**

Lysine-specific demethylase 2B, CXXC-type zinc finger protein 2, F-box and leucine-rich repeat protein 10, F-box protein FBL10, F-box/LRR-repeat protein 10, JmjC domain-containing histone demethylation protein 1B, Jumonji domain-containing EMSY-interactor methyltransferase motif protein, Protein JEMMA, Protein-containing CXXC domain 2, [Histone-H3]-lysine-36 demethylase 1B, CXXC2, FBL10, FBXL10, JHDM1B, PCCX2

### **Source and Purity:**

Rabbit polyclonal antibodies were produced by immunizing animals with a GST-fusion protein containing the N-terminal region of human KDM2B. Antibodies were purified by affinity purification using immunogen.

### **Storage Buffer and Condition:**

Supplied in 1 x PBS (pH 7.4), 100 ug/ml BSA, 40% Glycerol, 0.01% NaN<sub>3</sub>. Store at -20 °C. Stable for 6 months from date of receipt.

### **Species Specificity:**

Human, Mouse

### **Tested Applications:**

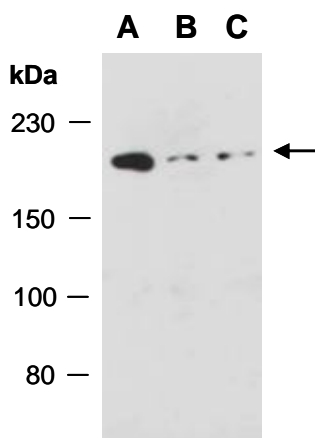
WB: 1:1,000-1:3,000 (detect endogenous protein\*)

\*: The apparent protein size on WB may be different from the calculated M.W. due to modifications.

---

**For research use only. Not for therapeutic or diagnostic purposes.**  
**Abiocode, Inc., 29397 Agoura Rd., Ste 106, Agoura Hills, CA 91301**

**Product Data:**



**Fig 1.** Western blot of total cell extracts from A) mouse thymus; B) human HeLa; C) human Jurkat; using anti-KDM2B (N) (R0863-1) at RT for 2 h.