



Order: (888)-282-5810 (Phone)  
(818)-707-0392 (Fax)  
[order@abiocode.com](mailto:order@abiocode.com)  
Web: [www.Abiocode.com](http://www.Abiocode.com)

---

## **PDGFRA (M) Antibody, Rabbit Polyclonal**

**Cat#: R1351-2**

**Quantity: 100 ul**

**Predicted | Observed M.W.: 123 | 170 kDa**

**Lot#: Refer to vial**

**Application: WB**

**Uniprot ID: P16234**

### **Background:**

Platelet-derived growth factor receptor alpha (PDGFRA) is a single-pass type I membrane protein belonging to the protein kinase superfamily, the Tyr protein kinase family, and the CSF-1/PDGF receptor subfamily. PDGFRA is a tyrosine-protein kinase that acts as a cell-surface receptor for PDGFA, PDGFB and PDGFC and plays an essential role in the regulation of embryonic development, cell proliferation, survival and chemotaxis. Depending on the context, PDGFRA promotes or inhibits cell proliferation and cell migration. PDGFRA plays an important role in the differentiation of bone marrow-derived mesenchymal stem cells. Furthermore, PDGFRA is required for normal skeleton development and cephalic closure during embryonic development.

### **Other Names:**

Platelet-derived growth factor receptor alpha, PDGF-R-alpha, PDGFR-alpha, Alpha platelet-derived growth factor receptor, Alpha-type platelet-derived growth factor receptor, CD140 antigen-like family member A, CD140a antigen, Platelet-derived growth factor alpha receptor, Platelet-derived growth factor receptor 2, PDGFR-2, CD140a, PDGFR2, RHEPDGFRA

### **Source and Purity:**

Rabbit polyclonal antibodies were produced by immunizing animals with a GST-fusion protein containing the middle region of human PDGFRA. Antibodies were purified by affinity purification using immunogen.

### **Storage Buffer and Condition:**

Supplied in 1 x PBS (pH 7.4), 100 ug/ml BSA, 40% Glycerol, 0.01% NaN<sub>3</sub>. Store at -20 °C. Stable for 6 months from date of receipt.

### **Species Specificity:**

Human, Mouse

### **Tested Applications:**

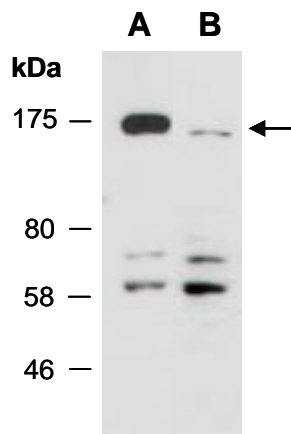
WB: 1:1,000-1:3,000 (detect endogenous protein\*)

\*: The apparent protein size on WB may be different from the calculated M.W. due to modifications.

---

**For research use only. Not for therapeutic or diagnostic purposes.  
Abiocode, Inc., 29397 Agoura Rd., Ste 106, Agoura Hills, CA 91301**

**Product Data:**



**Fig 1.** Western blot of total cell extracts from A) mouse thymus; B) human HeLa; using anti-PDGFR $\alpha$  (M) (R1351-2) at RT for 2 h.