



Order: (888)-282-5810 (Phone)
(818)-707-0392 (Fax)
order@abiocode.com
Web: www.Abiocode.com

CABLES2 (M) Antibody, Rabbit Polyclonal

Cat#: R1488-2

Quantity: 100 ul

Predicted | Observed M.W.: 52 | 65 kDa

Lot#: Refer to vial

Application: WB

Uniprot ID: Q9BTV7

Background:

CDK5 and ABL1 enzyme substrate 2 (CABLES2) belongs to the cyclin family. Although the function of CABLES2 is unknown, it is probably involved in G1-S cell cycle transition.

Other Names:

CDK5 and ABL1 enzyme substrate 2. Interactor with CDK3 2, Ik3-2, C20orf150

Source and Purity:

Rabbit polyclonal antibodies were produced by immunizing animals with a GST-fusion protein containing the middle region of human CABLES2. Antibodies were purified by affinity purification using immunogen.

Storage Buffer and Condition:

Supplied in 1 x PBS (pH 7.4), 100 ug/ml BSA, 40% Glycerol, 0.01% NaN₃. Store at -20 °C. Stable for 6 months from date of receipt.

Species Specificity:

Human, Mouse

Tested Applications:

WB: 1:1,000-1:3,000 (detect endogenous protein*)

*: The apparent protein size on WB may be different from the calculated M.W. due to modifications.

Product Data:

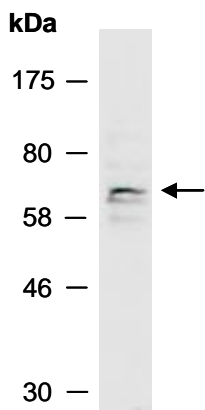


Fig 1. Western blot of total cell extracts from mouse thymus, anti-CABLES2 (M) (R1488-2) at RT for 2 h.