



Order: (888)-282-5810 (Phone)
(818)-707-0392 (Fax)
order@abiocode.com
Web: www.Abiocode.com

CDC25A (M) Antibody, Rabbit Polyclonal

Cat#: R1515-2

Quantity: 100 ul

Predicted | Observed M.W.: 59 | 70 kDa

Lot#: Refer to vial

Application: WB

Uniprot ID: P30304

Background:

M-phase inducer phosphatase 1 (CDC25A), a Tyrosine protein phosphatase belonging to the MPI phosphatase family, functions as a dosage-dependent inducer of mitotic progression. CDC25A directly dephosphorylates CDK1 and stimulates its kinase activity; CDC25A also dephosphorylates CDK2 in complex with cyclin E *in vitro*.

Other Names:

M-phase inducer phosphatase 1, Dual specificity phosphatase Cdc25A

Source and Purity:

Rabbit polyclonal antibodies were produced by immunizing animals with a GST-fusion protein containing the middle region of human CDC25A. Antibodies were purified by affinity purification using immunogen.

Storage Buffer and Condition:

Supplied in 1 x PBS (pH 7.4), 100 ug/ml BSA, 40% Glycerol, 0.01% NaN₃. Store at -20 °C. Stable for 6 months from date of receipt.

Species Specificity:

Human

Tested Applications:

WB: 1:1,000-1:3,000 (detect endogenous protein*)

*: The apparent protein size on WB may be different from the calculated M.W. due to modifications.

Product Data:

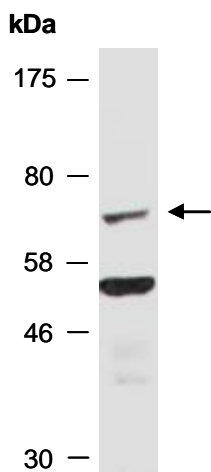


Fig 1. Western blot of total cell extracts from human Jurkat, anti-CDC25A (M) (R1515-2) at RT for 2 h.