



Order: (888)-282-5810 (Phone)
(818)-707-0392 (Fax)
order@abiocode.com
Web: www.Abiocode.com

CDKN2A (C2) Antibody, Rabbit Polyclonal

Cat#: R1580-2

Quantity: 100 ul

Predicted | Observed M.W.: 17 kDa

Lot#: Refer to vial

Application: WB

Uniprot ID: P42771

Background:

Cyclin-dependent kinase inhibitor 2A, isoforms 1/2/3 (CDKN2A) belongs to the CDKN2 cyclin-dependent kinase inhibitor family and acts as a negative regulator of the proliferation of normal cells by interacting strongly with CDK4 and CDK6. This inhibits their ability to interact with cyclins D and to phosphorylate the retinoblastoma protein.

Other Names:

Cyclin-dependent kinase inhibitor 2A, isoforms 1/2/3, Cyclin-dependent kinase 4 inhibitor A, CDK4I, Multiple tumor suppressor 1, MTS-1, p16-INK4a, p16-INK4, p16INK4A, CDKN2, MTS1

Source and Purity:

Rabbit polyclonal antibodies were produced by immunizing animals with a GST-fusion protein containing the C-terminal region of human CDKN2A. Antibodies were purified by affinity purification using immunogen.

Storage Buffer and Condition:

Supplied in 1 x PBS (pH 7.4), 100 ug/ml BSA, 40% Glycerol, 0.01% NaN₃. Store at -20 °C. Stable for 6 months from date of receipt.

Species Specificity:

Human

Tested Applications:

WB: 1:1,000-1:3,000 (detect endogenous protein*)

*: The apparent protein size on WB may be different from the calculated M.W. due to modifications.

Product Data:

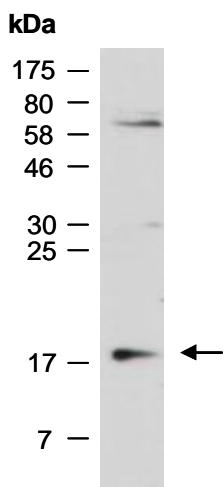


Fig 1. Western blot of total cell extracts from A) mouse brain; B) human HeLa; C) human Jurkat; using anti-SHBG (N) (R1589-1) at RT for 2 h.