



Order: (888)-282-5810 (Phone)
(818)-707-0392 (Fax)
order@abiocode.com
Web: www.Abiocode.com

ERCC1 (N) Antibody, Rabbit Polyclonal

Cat#: R1635-1

Quantity: 100 ul

Predicted | Observed M.W.: 33 | 36 kDa

Lot#: Refer to vial

Application: WB

Uniprot ID: P07992

Background:

DNA excision repair protein ERCC-1 (ERCC) belongs to the ERCC1/RAD10/SWI10 family and is responsible, in conjunction with SLX4, for the first step in the repair of interstrand cross-links (ICL). ERCC1 participates in the processing of anaphase bridge-generating DNA structures, which consist in incompletely processed DNA lesions arising during S or G2 phase, and can result in cytokinesis failure. ERCC1 is also required for homology-directed repair (HDR) of DNA double-strand breaks, in conjunction with SLX4.

Other Names:

DNA excision repair protein ERCC-1

Source and Purity:

Rabbit polyclonal antibodies were produced by immunizing animals with a GST-fusion protein containing the N-terminal region of human ERCC1. Antibodies were purified by affinity purification using immunogen.

Storage Buffer and Condition:

Supplied in 1 x PBS (pH 7.4), 100 ug/ml BSA, 40% Glycerol, 0.01% NaN₃. Store at -20 °C. Stable for 6 months from date of receipt.

Species Specificity:

Human

Tested Applications:

WB: 1:1,000-1:3,000 (detect endogenous protein*)

*: The apparent protein size on WB may be different from the calculated M.W. due to modifications.

Product Data:

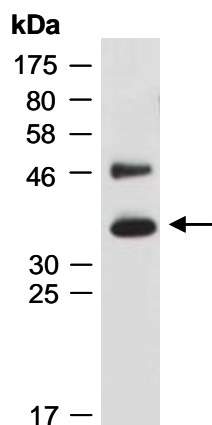


Fig 1. Western blot of total cell extracts from human HeLa, using anti-ERCC1 (N) (R1635-1) at RT for 2 h.