



Order: (888)-282-5810 (Phone)
(818)-707-0392 (Fax)
order@abiocode.com
Web: www.Abiocode.com

NAE1 (C) Antibody, Rabbit Polyclonal

Cat#: R1012-2

Quantity: 100 ul

Predicted | Observed M.W.: 60 | 70 kDa

Lot#: Refer to vial

Application: WB

Uniprot ID: Q13564

Background:

NEDD8-activating enzyme E1 regulatory subunit (NAE1) belongs to the ubiquitin-activating E1 family. It is the regulatory subunit of the dimeric UBA3-NAE1 E1 enzyme. E1 activates NEDD8 by first adenylating its C-terminal glycine residue with ATP, thereafter linking this residue to the side chain of the catalytic cysteine, yielding a NEDD8-UBA3 thioester and free AMP. E1 finally transfers NEDD8 to the catalytic cysteine of UBE2M. NAE1 is necessary for cell cycle progression through the S-M checkpoint. Overexpression of NAE1 causes apoptosis through deregulation of NEDD8 conjugation.

Other Names:

NEDD8-activating enzyme E1 regulatory subunit, Amyloid beta precursor protein-binding protein 1, 59 kDa, APP-BP1, Amyloid protein-binding protein 1, Proto-oncogene protein 1, APPBP1, HPP1

Source and Purity:

Rabbit polyclonal antibodies were produced by immunizing animals with a GST-fusion protein containing the C-terminal region of human NAE1. Antibodies were purified by affinity purification using immunogen.

Storage Buffer and Condition:

Supplied in 1 x PBS (pH 7.4), 100 ug/ml BSA, 40% Glycerol, 0.01% NaN₃. Store at -20 °C. Stable for 6 months from date of receipt.

Species Specificity:

Human, Mouse

Tested Applications:

WB: 1:500-1:3,000 (detect endogenous protein*)

*: The apparent protein size on WB may be different from the calculated M.W. due to modifications.

Product Data:

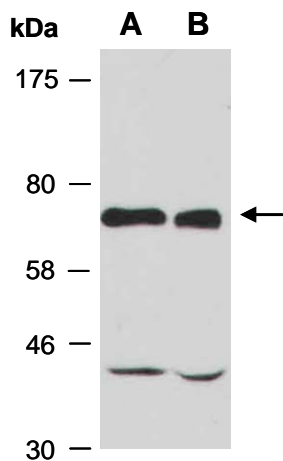


Fig 1. Western blot of total cell extracts from A) mouse brain, B) mouse thymus; using anti-NAE1 (C) (R1012-2) at RT for 2 h.