



Order: (888)-282-5810 (Phone)
(818)-707-0392 (Fax)
order@abiocode.com
Web: www.Abiocode.com

IKBA (C) Antibody, Rabbit Polyclonal

Cat#: R1340-2

Quantity: 100 ul

Predicted | Observed M.W.: 36 | 40 kDa

Lot#: Refer to vial

Application: WB

Uniprot ID: P25963

Background:

NF-kappa-B inhibitor alpha (IKBA) belongs to the NF-kappa-B inhibitor family and inhibits the activity of dimeric NF-kappa-B/REL complexes by trapping REL dimers in the cytoplasm through masking of their nuclear localization signals. On cellular stimulation by immune and proinflammatory responses, IKBA becomes phosphorylated promoting ubiquitination and degradation, enabling the dimeric RELA to translocate to the nucleus and activate transcription.

Other Names:

NF-kappa-B inhibitor alpha, I-kappa-B-alpha, Ikb-alpha, IkappaBalphabet, Major histocompatibility complex enhancer-binding protein MAD3, IKBA, MAD3, NFKBI

Source and Purity:

Rabbit polyclonal antibodies were produced by immunizing animals with a GST-fusion protein containing the C-terminal region of human IKBA. Antibodies were purified by affinity purification using immunogen.

Storage Buffer and Condition:

Supplied in 1 x PBS (pH 7.4), 100 ug/ml BSA, 40% Glycerol, 0.01% NaN₃. Store at -20 °C. Stable for 6 months from date of receipt.

Species Specificity:

Human, Mouse

Tested Applications:

WB: 1:1,000-1:3,000 (detect endogenous protein*)

*: The apparent protein size on WB may be different from the calculated M.W. due to modifications.

Product Data:

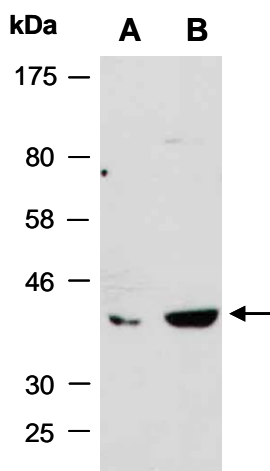


Fig 1. Western blot of total cell extracts from A) mouse brain, B) mouse thymus; using anti-IKBA (C) (R1340-2) at RT for 2 h.