



Order: (888)-282-5810 (Phone)
(818)-707-0392 (Fax)
order@abiocode.com
Web: www.Abiocode.com

LHX3 (N) Antibody, Rabbit Polyclonal

Cat#: R1899-3

Quantity: 100 ul

Predicted | Observed M.W.: 43 kDa

Lot#: Refer to vial

Application: WB

Uniprot ID: Q9UBR4

Background:

LIM/homeobox protein Lhx3 (LHX3) acts as a transcriptional activator. LHX3 binds to and activates the promoter of the alpha-glycoprotein gene, and synergistically enhances transcription from the prolactin promoter in cooperation with POU1F1/Pit-1. LHX3 is required for the establishment of the specialized cells of the pituitary gland and the nervous system. Additionally, LHX3 is involved in the development of interneurons and motor neurons in cooperation with LDB1 and ISL1.

Other Names:

LIM/homeobox protein Lhx3

Source and Purity:

Rabbit polyclonal antibodies were produced by immunizing animals with a GST-fusion protein containing the N-terminal region of human LHX3. Antibodies were purified by affinity purification using immunogen.

Storage Buffer and Condition:

Supplied in 1 x PBS (pH 7.4), 100 ug/ml BSA, 40% Glycerol, 0.01% NaN₃. Store at -20 °C. Stable for 6 months from date of receipt.

Species Specificity:

Human

Tested Applications:

WB: 1:500-1:3,000 (detect endogenous protein*)

*: The apparent protein size on WB may be different from the calculated M.W. due to modifications.

Product Data:

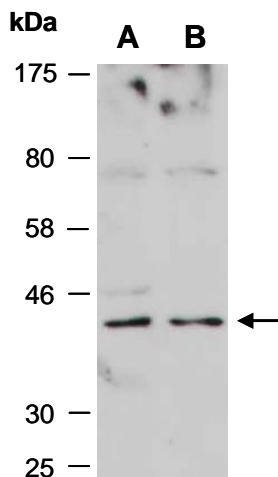


Fig 1. Western blot of total cell extracts from A) human HeLa, B) human Jurkat; using anti-LHX3 (N) (R1899-3) at RT for 2 h.