



Order: (888)-282-5810 (Phone)
(818)-707-0392 (Fax)
order@abiocode.com
Web: www.Abiocode.com

PHLPP1 (C) Antibody, Rabbit Polyclonal

Cat#: R3053-2

Quantity: 100 ul

Predicted | Observed M.W.: 185 kDa

Lot#: Refer to vial

Application: WB

Uniprot ID: O60346

Background:

PH domain leucine-rich repeat-containing protein phosphatase 1 (PHLPP1) is a peripheral membrane protein and protein phosphatase that mediates dephosphorylation of 'Ser-473' of AKT1, 'Ser-660' of PRKCB isoform beta-II and 'Ser-657' of PRKCA. AKT1 regulates the balance between cell survival and apoptosis through a cascade that primarily alters the function of transcription factors that regulate pro- and antiapoptotic genes. Dephosphorylation of 'Ser-473' of AKT1 triggers apoptosis and suppression of tumor growth.

Other Names:

PH domain leucine-rich repeat-containing protein phosphatase 1, Pleckstrin homology domain-containing family E member 1, PH domain-containing family E member 1, Suprachiasmatic nucleus circadian oscillatory protein, Hscop, KIAA0606, PHLPP, PLEKHE1, SCOP

Source and Purity:

Rabbit polyclonal antibodies were produced by immunizing animals with a GST-fusion protein containing the C-terminal region of human PHLPP1. Antibodies were purified by affinity purification using immunogen.

Storage Buffer and Condition:

Supplied in 1 x PBS (pH 7.4), 100 ug/ml BSA, 40% Glycerol, 0.01% NaN₃. Store at -20 °C. Stable for 6 months from date of receipt.

Species Specificity:

Human, Mouse

Tested Applications:

WB: 1:500-1:3,000 (detect endogenous protein*)

*: The apparent protein size on WB may be different from the calculated M.W. due to modifications.

Product Data:

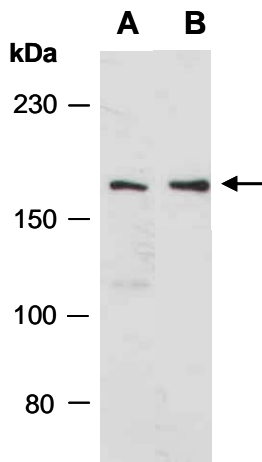


Fig 1. Western blot of total cell extracts from A) mouse thymus, B) human Jurkat, using anti-PHLPP1 (C) (R3053-2) at RT for 2 h.