



Order: (888)-282-5810 (Phone)
(818)-707-0392 (Fax)
order@abiocode.com
Web: www.Abiocode.com

GPR15 (N) Antibody, Rabbit Polyclonal

Cat#: R3170-1

Quantity: 100 ul

Predicted | Observed M.W.: 41 | 50 kDa

Lot#: Refer to vial

Application: WB

Uniprot ID: P49685

Background:

G-protein coupled receptor 15 (GPR15) is a multi-pass membrane protein belonging to the G-protein coupled receptor 1 family. GPR15 is a probable chemokine receptor as well as an alternative coreceptor with CD4 for HIV-1 infection.

Other Names:

G-protein coupled receptor 15, Brother of Bonzo, BoB

Source and Purity:

Rabbit polyclonal antibodies were produced by immunizing animals with a GST-fusion protein containing the N-terminal region of human GPR15. Antibodies were purified by affinity purification using immunogen.

Storage Buffer and Condition:

Supplied in 1 x PBS (pH 7.4), 100 ug/ml BSA, 40% Glycerol, 0.01% NaN₃. Store at -20 °C. Stable for 6 months from date of receipt.

Species Specificity:

Human, Mouse

Tested Applications:

WB: 1:1,000-1:3,000 (detect endogenous protein*)

*: The apparent protein size on WB may be different from the calculated M.W. due to modifications.

Product Data:

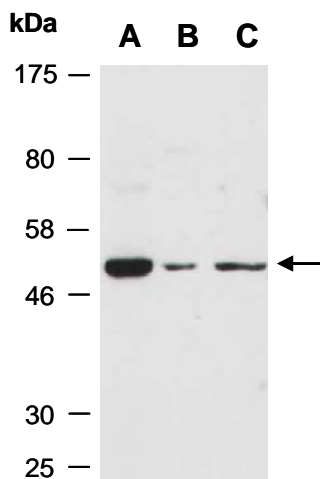


Fig 1. Western blot of total cell extracts from A) mouse thymus, B) human HeLa, C) human Jurkat; using anti-GPR15 (N) (R3170-1) at RT for 2 h.