



Order: (888)-282-5810 (Phone)
(818)-707-0392 (Fax)
order@abiocode.com
Web: www.Abiocode.com

CLEC7A (N) Antibody, Rabbit Polyclonal

Cat#: R3187-1

Quantity: 100 ul

Predicted | Observed M.W.: 28 kDa

Lot#: Refer to vial

Application: WB

Uniprot ID: Q9BXN2

Background:

C-type lectin domain family 7 member A (CLEC7A) is a single-pass type II membrane protein and lectin that functions as pattern receptor specific for beta-1,3-linked and beta-1,6-linked glucans, such as cell wall constituents from pathogenic bacteria and fungi. CLEC7A is necessary for the TLR2-mediated inflammatory response and for TLR2-mediated activation of NF-kappa-B.

Other Names:

C-type lectin domain family 7 member A, Beta-glucan receptor, C-type lectin superfamily member 12, Dendritic cell-associated C-type lectin 1, DC-associated C-type lectin 1, Dectin-1, BGR, CLECSF12, DECTIN1

Source and Purity:

Rabbit polyclonal antibodies were produced by immunizing animals with a GST-fusion protein containing the N-terminal region of human CLEC7A. Antibodies were purified by affinity purification using immunogen.

Storage Buffer and Condition:

Supplied in 1 x PBS (pH 7.4), 100 ug/ml BSA, 40% Glycerol, 0.01% NaN₃. Store at -20 °C. Stable for 6 months from date of receipt.

Species Specificity:

Human, Mouse

Tested Applications:

WB: 1:500-1:3,000 (detect endogenous protein*)

*: The apparent protein size on WB may be different from the calculated M.W. due to modifications.

Product Data:

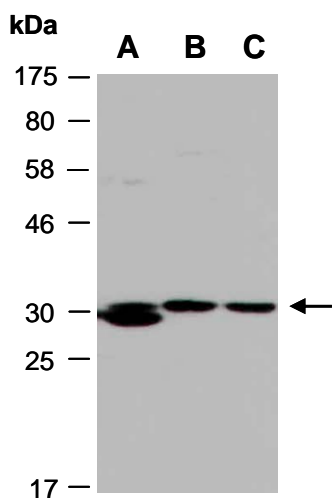


Fig 1. Western blot of total cell extracts from A) mouse thymus, B) human HeLa, C) human Jurket, using anti-CLEC7A (N) (R3187-1) at RT for 2 h.