



Order: (888)-282-5810 (Phone)
(818)-707-0392 (Fax)
order@abiocode.com
Web: www.Abiocode.com

CHMP4C (N) Antibody, Rabbit Polyclonal

Cat#: R3257-1

Quantity: 100 ul

Predicted | Observed M.W.: 26 | 36 kDa

Lot#: Refer to vial

Application: WB

Uniprot ID: Q96CF2

Background:

Charged multivesicular body protein 4c (CHMP4C) is a peripheral membrane protein belonging to the SNF7 family. CHMP4C is a probable core component of the endosomal sorting required for transport complex III (ESCRT-III) which is involved in multivesicular bodies (MVBs) formation and sorting of endosomal cargo proteins into MVBs. MVBs contain intraluminal vesicles (ILVs) that are generated by invagination and scission from the limiting membrane of the endosome and mostly are delivered to lysosomes enabling degradation of membrane proteins, such as stimulated growth factor receptors, lysosomal enzymes and lipids.

Other Names:

Charged multivesicular body protein 4c, SHAX3, Chromatin-modifying protein 4c, CHMP4c, SNF7 homolog associated with Alix 3, SNF7-3, hSnf7-3, Vacuolar protein sorting-associated protein 32-3, Vps32-3, hVps32-3

Source and Purity:

Rabbit polyclonal antibodies were produced by immunizing animals with a GST-fusion protein containing the N-terminal region of human CHMP4C. Antibodies were purified by affinity purification using immunogen.

Storage Buffer and Condition:

Supplied in 1 x PBS (pH 7.4), 100 ug/ml BSA, 40% Glycerol, 0.01% NaN₃. Store at -20 °C. Stable for 6 months from date of receipt.

Species Specificity:

Human

Tested Applications:

WB: 1:1,000-1:3,000 (detect endogenous protein*)

*: The apparent protein size on WB may be different from the calculated M.W. due to modifications.

Product Data:

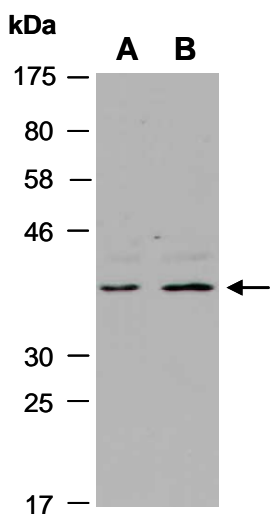


Fig 1. Western blot of total cell extracts from A) human HeLa, B) human Jurkat; using anti-CHMP4C (N) (R3257-1) at RT for 2 h.