



Order: (888)-282-5810 (Phone)
(818)-707-0392 (Fax)
order@abiocode.com
Web: www.Abiocode.com

SLX4 (C) Antibody, Rabbit Polyclonal

Cat#: R3260-2

Quantity: 100 ul

Predicted | Observed M.W.: 200 | 170 kDa

Lot#: Refer to vial

Application: WB

Uniprot ID: Q8IY92

Background:

Structure-specific endonuclease subunit SLX4 (SLX4) belongs to the SLX4 family and is a regulatory subunit that interacts with and increases the activity of different structure-specific endonucleases. SLX4 has several distinct roles in protecting genome stability by resolving diverse forms of deleterious DNA structures originating from replication and recombination intermediates and from DNA damage.

Other Names:

Structure-specific endonuclease subunit SLX4, BTB/POZ domain-containing protein 12, BTBD12, KIAA1784, KIAA1987

Source and Purity:

Rabbit polyclonal antibodies were produced by immunizing animals with a GST-fusion protein containing the C-terminal region of human SLX4. Antibodies were purified by affinity purification using immunogen.

Storage Buffer and Condition:

Supplied in 1 x PBS (pH 7.4), 100 ug/ml BSA, 40% Glycerol, 0.01% NaN₃. Store at -20 °C. Stable for 6 months from date of receipt.

Species Specificity:

Human, Mouse

Tested Applications:

WB: 1:500-1:3,000 (detect endogenous protein*)

*: The apparent protein size on WB may be different from the calculated M.W. due to modifications.

Product Data:

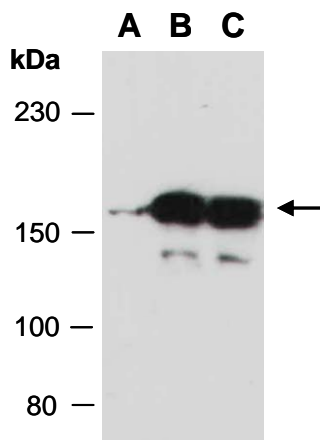


Fig 1. Western blot of total cell extracts from A) mouse thymus, B) human HeLa, C) human Jurkat; using anti-SLX4 (C) (R3260-2) at RT for 2 h.