



Order: (888)-282-5810 (Phone)
(818)-707-0392 (Fax)
order@abiocode.com
Web: www.Abiocode.com

KLF4 (C) Antibody, Rabbit Polyclonal

Cat#: R0809-2

Quantity: 100 ul

Predicted | Observed M.W.: 55 | 58 kDa

Lot#: Refer to vial

Application: WB

Uniprot ID: O43474

Background:

Kruppel-like factors (KLFs) are a family of broadly expressed zinc finger transcription factors. Krueppel-like factor 4 (KLF4) is a transcription factor that binds to the 5'-CACCC-3' core sequence, and can act both as activator and as repressor. KLF4 binds to the promoter region of its own gene and can activate its own transcription. KLF4 regulates the expression of key transcription factors during embryonic development, and plays an important role in maintaining embryonic stem cells, and in preventing their differentiation. KLF4 is required for establishing the barrier function of the skin and for postnatal maturation and maintenance of the ocular surface. KLF4 is also involved in the differentiation of epithelial cells and may also function in skeletal and kidney development.

Other Names:

Krueppel-like factor 4, Epithelial zinc finger protein EZF, Gut-enriched krueppel-like factor, EZF, GKLF

Source and Purity:

Rabbit polyclonal antibodies were produced by immunizing animals with a GST-fusion protein containing the C-terminal region of human KLF4. Antibodies were purified by affinity purification using immunogen.

Storage Buffer and Condition:

Supplied in 1 x PBS (pH 7.4), 100 ug/ml BSA, 40% Glycerol, 0.01% NaN₃. Store at -20 °C. Stable for 6 months from date of receipt.

Species Specificity:

Human, Mouse, Rat

Tested Applications:

WB: 1:1,000-1:3,000 (detect endogenous protein*)

*: The apparent protein size on WB may be different from the calculated M.W. due to modifications.

Product Data:

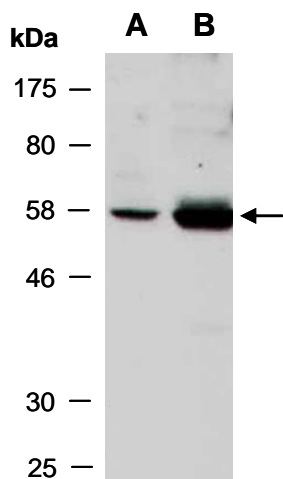


Fig 1. Western blot of total cell extracts from A) mouse brain, B) mouse thymus; using anti-KLF4 (C) (R0809-2) at RT for 2 h.