



Order: (888)-282-5810 (Phone)  
(818)-707-0392 (Fax)  
[order@abiocode.com](mailto:order@abiocode.com)  
Web: [www.Abiocode.com](http://www.Abiocode.com)

---

## **FZD6 (N) Antibody, Rabbit Polyclonal**

**Cat#: R0824-1**

**Quantity: 100 ul**

**Predicted | Observed MW: 79 | 85 kDa**

**Lot#: Refer to vial**

**Application: WB**

**Uniprot ID: O60353**

### **Background:**

Frizzled-6 (FZD6) is a multi-pass membrane protein belonging to the G-protein coupled receptor Fz/Smo family. FZD6 is a receptor for Wnt proteins. Most of frizzled receptors are coupled to the beta-catenin canonical signaling pathway, which leads to the activation of disheveled proteins, inhibition of GSK-3 kinase, nuclear accumulation of beta-catenin and activation of Wnt target genes. A second signaling pathway involving PKC and calcium fluxes has been seen for some family members, but it is not yet clear if it represents a distinct pathway or if it can be integrated in the canonical pathway, as PKC seems to be required for Wnt-mediated inactivation of GSK-3 kinase. Both pathways seem to involve interactions with G-proteins. FZD6 may be involved in transduction and intercellular transmission of polarity information during tissue morphogenesis and/or in differentiated tissues.

### **Other Names:**

Frizzled-6, Fz-6, hFz6

### **Source and Purity:**

Rabbit polyclonal antibodies were produced by immunizing animals with a GST-fusion protein containing N-terminal region of human FZD6. Antibodies were purified by affinity purification using immunogen.

### **Storage Buffer and Condition:**

Supplied in 1 x PBS (pH 7.4), 100 ug/ml BSA, 40% Glycerol, 0.01% NaN<sub>3</sub>. Store at -20 °C. Stable for 6 months from date of receipt.

### **Species Specificity:**

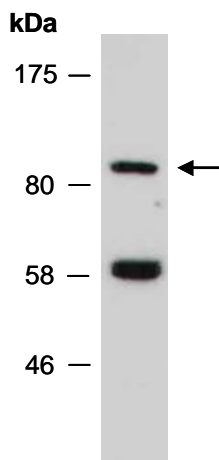
Human, Mouse

### **Tested Applications:**

WB: 1:500-1:2,000 (detect endogenous protein\*)

\*: The apparent protein size on WB may be different from the calculated M.W. due to modifications.

**Product Data:**



**Fig 1.** Western blot of total cell extracts from mouse thymus; using anti-FZD6 (N) (R0824-1) at RT for 2 h.