



Order: (888)-282-5810 (Phone)
(818)-707-0392 (Fax)
order@abiocode.com
Web: www.Abiocode.com

CSNK1A1 (C) Antibody, Rabbit Polyclonal

Cat#: R0834-3

Quantity: 100 ul

Predicted | Observed MW: 39 kDa

Lot#: Refer to vial

Application: WB

Uniprot ID: P48729

Background:

Casein kinase I isoform alpha (CSNK1A1) belongs to the protein kinase superfamily, the CK1 Ser/Thr protein kinase family, and the Casein kinase I subfamily. Casein kinases are operationally defined by their preferential utilization of acidic proteins such as caseins as substrates. It can phosphorylate a large number of proteins. CSNK1A1 participates in Wnt signaling. CSNK1A1 phosphorylates CTNNB1 at 'Ser-45'. CSNK1A1 may play a role in segregating chromosomes during mitosis.

Other Names:

Casein kinase I isoform alpha, CKI-alpha, CK1

Source and Purity:

Rabbit polyclonal antibodies were produced by immunizing animals with a GST-fusion protein containing C-terminal region of human CSNK1A1. Antibodies were purified by affinity purification using immunogen.

Storage Buffer and Condition:

Supplied in 1 x PBS (pH 7.4), 100 ug/ml BSA, 40% Glycerol, 0.01% NaN₃. Store at -20 °C. Stable for 6 months from date of receipt.

Species Specificity:

Human, Mouse

Tested Applications:

WB: 1:1,000-1:3,000 (detect endogenous protein*)

*: The apparent protein size on WB may be different from the calculated M.W. due to modifications.

Product Data:

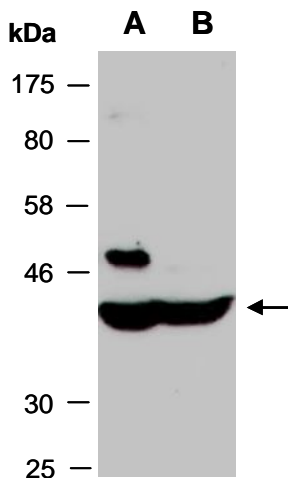


Fig 1. Western blot of total cell extracts from A) human HeLa, B) human Jurkat; using anti-CSNK1A1 (C) (R0834-3) at RT for 2 h.