



Order: (888)-282-5810 (Phone)
(818)-707-0392 (Fax)
order@abiocode.com
Web: www.Abiocode.com

ACE (C) Antibody, Rabbit Polyclonal

Cat#: R1102-2

Quantity: 100 ul

Predicted | Observed MW: 150 kDa

Lot#: Refer to vial

Application: WB

Uniprot ID: P12821

Background:

Angiotensin-converting enzyme (ACE) is a single-pass type I membrane protein belonging to the peptidase M2 family. ACE converts angiotensin I to angiotensin II by release of the terminal His-Leu, this results in an increase of the vasoconstrictor activity of angiotensin. ACE is also able to inactivate bradykinin, a potent vasodilator. ACE has also a glycosidase activity which releases GPI-anchored proteins from the membrane by cleaving the mannose linkage in the GPI moiety.

Other Names:

Angiotensin-converting enzyme, CD143, Dipeptidyl carboxypeptidase I, Kininase II, DCP, DCP1

Source and Purity:

Rabbit polyclonal antibodies were produced by immunizing animals with a GST-fusion protein containing C-terminal region of human ACE. Antibodies were purified by affinity purification using immunogen.

Storage Buffer and Condition:

Supplied in 1 x PBS (pH 7.4), 100 ug/ml BSA, 40% Glycerol, 0.01% NaN₃. Store at -20 °C. Stable for 6 months from date of receipt.

Species Specificity:

Human, Mouse

Tested Applications:

WB: 1:500-1:2,000 (detect endogenous protein*)

*: The apparent protein size on WB may be different from the calculated M.W. due to modifications.

Product Data:

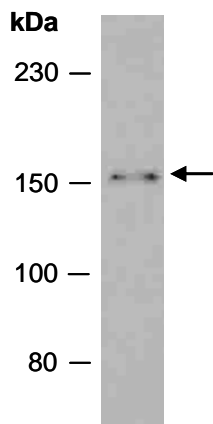


Fig 1. Western blot of total cell extracts from mouse thymus; using anti-ACE (C) (R1102-2) at RT for 2 h.