



Order: (888)-282-5810 (Phone)
(818)-707-0392 (Fax)
order@abiocode.com
Web: www.Abiocode.com

CAMK1G (C1) Antibody, Rabbit Polyclonal

Cat#: R1407-1

Quantity: 100 ul

Predicted I Observed M.W.: 53 kDa

Lot#: Refer to vial

Application: WB

Uniprot ID: Q96NX5

Background:

Calcium/calmodulin-dependent protein kinase type 1G (CAMK1G) is a peripheral membrane protein belonging to the protein kinase superfamily, the CAMK Ser/Thr protein kinase family, and the CaMK subfamily. CAMK1G is a calcium/calmodulin-dependent protein kinase belonging to a proposed calcium-triggered signaling cascade. In vitro CAMK1G phosphorylates transcription factor CREB1.

Other Names:

Calcium/calmodulin-dependent protein kinase type 1G, CaM kinase I gamma, CaM kinase IG, CaM-KI gamma, CaMKI gamma, CaMKIG, CaMK-like CREB kinase III, CLICK III, CLICK3, VWS1

Source and Purity:

Rabbit polyclonal antibodies were produced by immunizing animals with a GST-fusion protein containing the C-terminal region of human CAMK1G. Antibodies were purified by affinity purification using immunogen.

Storage Buffer and Condition:

Supplied in 1 x PBS (pH 7.4), 100 ug/ml BSA, 40% Glycerol, 0.01% NaN₃. Store at -20 °C. Stable for 6 months from date of receipt.

Species Specificity:

Human

Tested Applications:

WB: 1:1,000-1:3,000 (detect endogenous protein*)

*: The apparent protein size on WB may be different from the calculated M.W. due to modifications.



Order: (888)-282-5810 (Phone)
(818)-707-0392 (Fax)
order@abiocode.com
Web: www.Abiocode.com

Product Data:

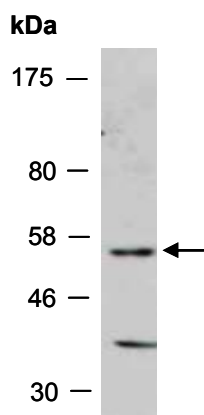


Fig 1. Western blot of total cell extracts from human HeLa; using anti-CAMK1G (C1) (R1407-1) at RT for 2 h.