



Order: (888)-282-5810 (Phone)
(818)-707-0392 (Fax)
order@abiocode.com
Web: www.Abiocode.com

FBXL3 (C) Antibody, Rabbit Polyclonal

Cat#: R3143-2

Quantity: 100 ul

Predicted | Observed M.W.: 49 kDa

Lot#: Refer to vial

Application: WB

Uniprot ID: Q9UKT7

Background:

F-box/LRR-repeat protein 3 (FBXL3) is a substrate-recognition component of the SCF(FBXL3) E3 ubiquitin ligase complex involved in circadian rhythm function. FBXL3 plays a key role in the maintenance of both the speed and the robustness of the circadian clock oscillation.

Other Names:

F-box/LRR-repeat protein 3, F-box and leucine-rich repeat protein 3A, F-box/LRR-repeat protein 3A, FBL3A, FBXL3A

Source and Purity:

Rabbit polyclonal antibodies were produced by immunizing animals with a GST-fusion protein containing the C-terminal region of human FBXL3. Antibodies were purified by affinity purification using immunogen.

Storage Buffer and Condition:

Supplied in 1 x PBS (pH 7.4), 100 ug/ml BSA, 40% Glycerol, 0.01% NaN₃. Store at -20 °C. Stable for 6 months from date of receipt.

Species Specificity:

Human, Mouse

Tested Applications:

WB: 1:500-1:3,000 (detect endogenous protein*)

*: The apparent protein size on WB may be different from the calculated M.W. due to modifications.

Product Data:

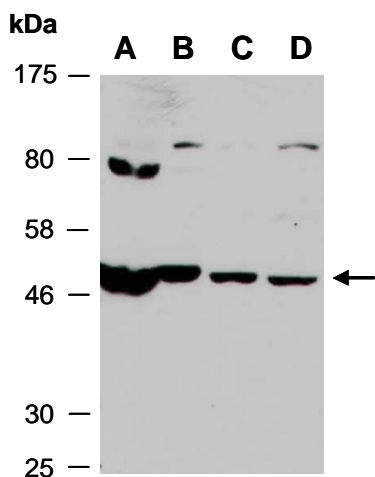


Fig 1. Western blot of total cell extracts from A) mouse brain, B) mouse thymus, C) human HeLa, D) human Jurkat; using anti-FBXL3 (C) (R3143-2) at RT for 2 h.