



Order: (888)-282-5810 (Phone)  
(818)-707-0392 (Fax)  
[order@abiocode.com](mailto:order@abiocode.com)  
Web: [www.Abiocode.com](http://www.Abiocode.com)

---

## ROS1 (C) Antibody, Rabbit Polyclonal

**Cat#:** R3288-2

**Quantity:** 100 ul

**Predicted I Observed M.W.:** 157 kDa

**Lot#:** Refer to vial

**Application:** WB

**Uniprot ID:** Q9SJQ6

### **Background:**

REPRESSOR OF SILENCING1 (ROS1) is a repressor of transcriptional gene silencing. ROS1 functions by demethylating the target promoter DNA. ROS1 interacts physically with RPA2/ROR1. In the *ros1* mutants, an increase in methylation is observed in a number of gene promoters. Among the loci affected by *ros1*, a few (RD29A and At1g76930) are affected in cytosine methylation in all sequence contexts (CpG, CpNpG or CpNpN), although many others are affected primarily in non-CpG contexts.

### **Other Names:**

ATROS1, DEMETER-LIKE 1, DML1, REPRESSOR OF SILENCING1, ROS1

### **Source and Purity:**

Rabbit polyclonal antibodies were produced by immunizing animals with a GST-fusion protein containing the C-terminal region of *arabidopsis thaliana* ROS1 (At2g36490). Antibodies were purified by affinity purification using immunogen.

### **Storage Buffer and Condition:**

Supplied in 1 x PBS (pH 7.4), 100 ug/ml BSA, 40% Glycerol, 0.01% NaN<sub>3</sub>. Store at -20 °C. Stable for 6 months from date of receipt.

### **Species Specificity:**

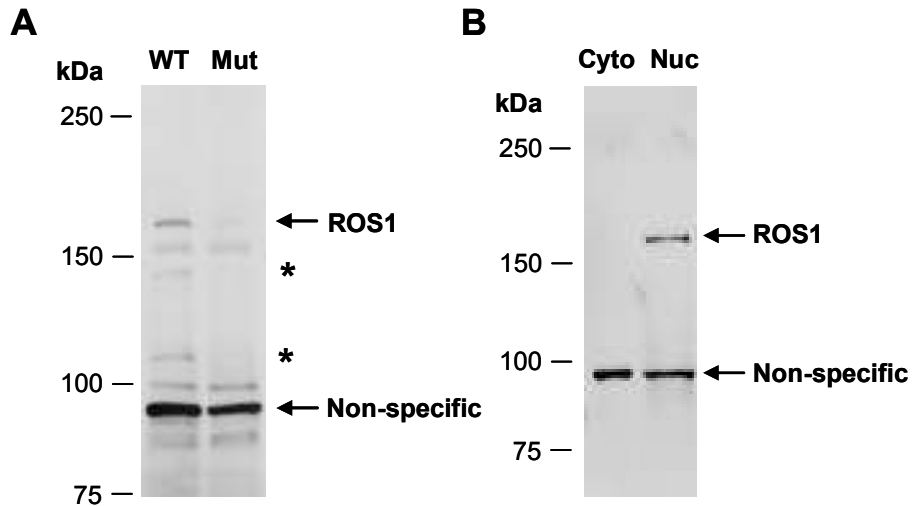
*Arabidopsis thaliana*

### **Tested Applications:**

WB: 1:500-1:2,000 (detect endogenous protein\*)

\*: The apparent protein size on WB may be different from the calculated M.W. due to modifications.

**Product Data:**



**Fig 1. A)** Western blot analysis of equal amounts of protein extracts (Cat#: L3288) from wild type (WT) or ROS1-knockdown mutant (Mut; promoter T-DNA insertion) *arabidopsis* leaves, using anti-ROS1 (C) (R3288-2) at RT for 2 h. \* may represent truncated ROS1. **B)** Same as in A except that cytoplasmic (cyto) and nuclear (nuc) fractions prepared from WT leaves were used.